



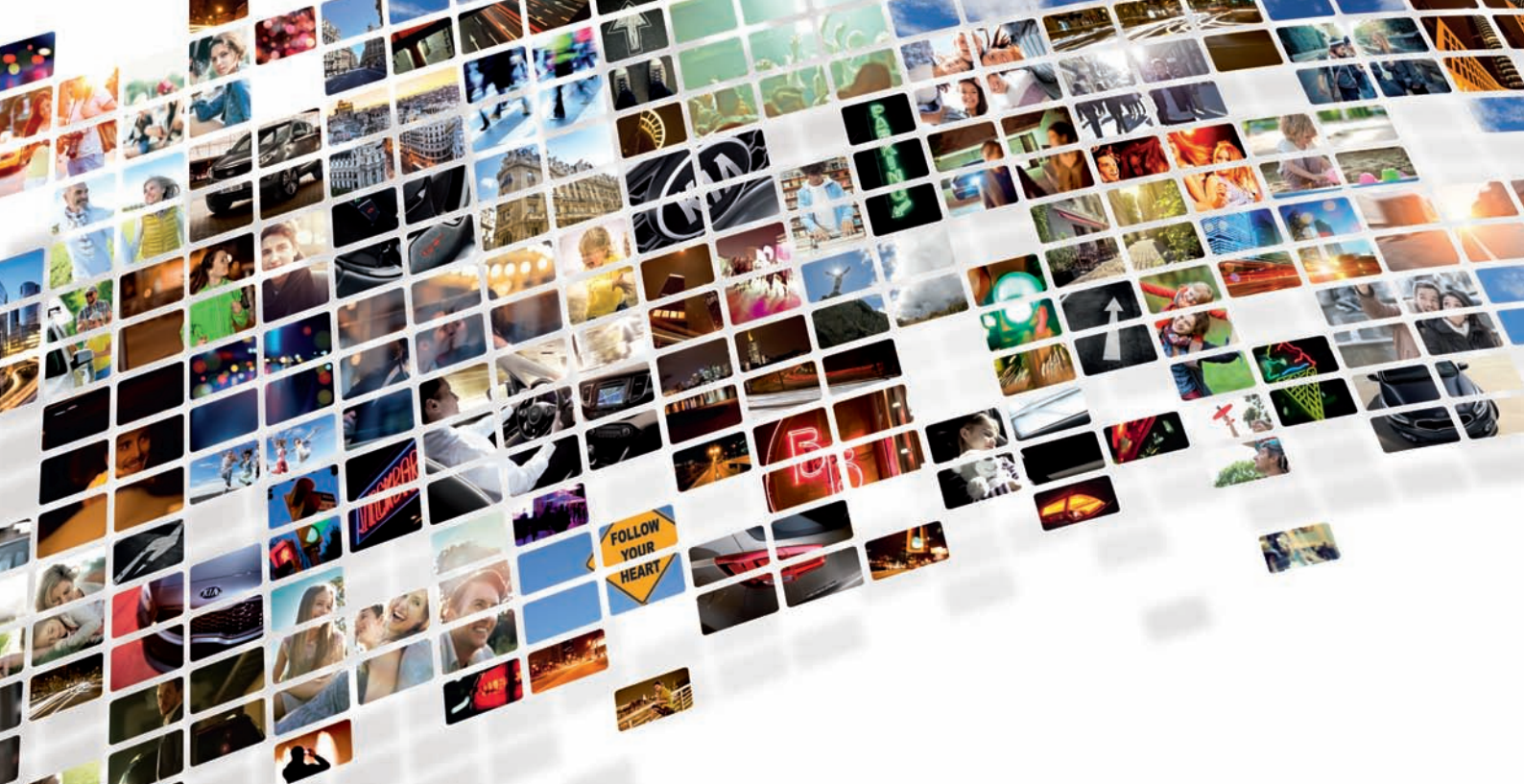
The new Kia

e-soul



The Power to Surprise





Life is what you make of it. Welcome to the world of Kia.

Life is spectacular. It is vivid, unpredictable and exciting in all its facets. Whatever will happen, wherever you will go and whatever you will discover, Kia is with you.

We at Kia have dedicated our lives to making a contribution towards building a better future. That is why we develop and build cars which help you to discover and enjoy new horizons. Cars with stunning designs, advanced technologies and smart solutions. Cars with our remarkable 7-year warranty as proof of our outstanding quality. Whatever we do, we are driven by one mission: to always exceed your expectations.

We call it 'The Power to Surprise'. Now, we invite you to take a closer look and allow us to surprise you.

EXTERIOR

CELEBRATE THE EXTRAORDINARY

Fresh, funky and playful, the future is full of possibilities in the new Kia e-Soul all-electric-crossover. With its eccentric design styling featuring a front plug-in charge socket, stunning interior with chill-out-sound-linked mood lighting, the latest technology including Kia's innovative Head-Up-Display (K3), plus an advanced EV powertrain that delivers a range of up to 452 km on one full charge (long range battery)– this is an electric car with its own truly unique character, just like the people who drive it.







CHERISH THE EXCEPTIONAL

The new Kia e-Soul celebrates its personality from every angle! From behind, the iconic 3D muscular rear design showcases futuristic-looking wrap-around LED rear lamps, surrounding the vertical tailgate for easy loading and extra boot capacity. Finished off with an iconic rear bumper shape and dynamic extra moulding for extra stability, the Kia e-Soul leaves a fun and lasting impression that others can only dream of.



EXTERIOR

RELISH THE ENGAGING

Stand back and admire the quirky dynamic character of the Kia e-Soul with its stand-out body silhouette and clean-cut lines, then smile at the stand-out Soul logo on the C-pillar for that extra touch of fun. Customize the exterior of your new e-Soul with a choice of vibrant two-tone colour exterior combinations that mix colour with vibrant metallic shades. With newly developed 17-inch alloy wheels, you've created a car that's all about you.



Full LED Headlamps

Seamlessly integrated into the sleek front are dual high and low-beam LED headlamps with LED Daytime Running Lights below as standard.





ADMIRE THE ENTICING

Inside the new Kia e-Soul the fun continues with its high-quality, spacious interior, cleverly designed seating, stylish fascia and inspiring innovations in technology, sound and lighting. Listen to the beat of the premium Harman Kardon sound system and set the mood with 3D sound-effect lighting on the door trims that pulsates to the music, in 8 different colours and 6 unique themes.



Supervision Cluster

The highly visible instrument cluster features a 7" OLED display delivering essential information such as the distance covered and how far you can drive before the next recharge is due.




Navigation System

The high-definition 10.25" TFT-LCD multi-language navigation system offers an advanced split-screen function enabling you to view map directions, weather and compass, as well as information about the battery status, available range and next charging station location. The home screen can also be customized with a basic or advanced layout. What's more, the screen offers Bluetooth multi-connection, so two devices can be connected at the same time – one for conventional connection and one for audio streaming.

KIA'S CONNECTED SERVICES

WHERE? WHEN? HOW? THE ANSWER IS HERE.

An aerial photograph of a city street, likely in Madrid, showing a wide boulevard with multiple lanes, palm trees, and historic European architecture. Two large red location pins are overlaid on the image, one in the center-left and one on the right side, indicating specific points of interest or destinations.

Our new navigation system with Kia's Connected Services powered by TomTom Live Services takes reliable route guidance to the next level of accuracy and excellence. It keeps you in touch with the outside world and offers more handy information than ever. At the heart is a Wi-Fi unit that enables the e-Soul navigation system to connect to the Internet through your smartphone.*



Live traffic**

The navigation system delivers highly accurate live traffic information that is updated every two minutes, so you know exactly where traffic is running smoothly, or which areas to avoid. When things get busy, the system lets you know and suggests alternative routes.



Speed cameras**

You'll also be alerted to a whole range of speed cameras, including fixed and stationary ones, as well as restricted access zones. The system can even take into account areas where accidents are particularly common, and warn you about these accident black spots.



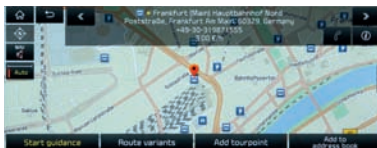
Local Search

If you're looking for a sushi restaurant, a supermarket or a particular place to meet, simply select Local Search. The database contains 500 searchable categories, 25,000 keywords and 250,000 places to ensure you find what you need.



Weather forecast

Is your weekend away going to be sunny or a washout? Better check the weather forecast. Just type in your destination to view a four-day summary, complete with minimum and maximum temperatures, wind speed and chances of sun or rain.



Parking information

To help you park your car swiftly, the system will indicate parking areas before you arrive at your destination. It will show potential on-street parking spaces based on historic data, and off-street parking with colour-coded availability.



Charging stations

The online directory displays the locations of charging stations as well as other details such as payment methods, plug availability and compatible connector types.



androidauto

Android Auto™ is designed to keep you perfectly connected to your phone – while minimizing distractions so you stay safe on the road. The simple, intuitive interface lets you access features like Google Maps, apps, music and voice control, and automatically organizes info into simple cards that appear just when they're needed.



Apple CarPlay™ is a smart, safe way to use your iPhone while driving. It takes all the things you might want to do, and puts them into your e-Soul's display, so you can get directions, make a call and listen to music – all while staying focused on the road.

* Smartphone with data plan required to activate services. ** Legal restrictions to these services may apply depending on country usage.

APPRECIATE THE EFFECTIVE

Even though the new Kia e-Soul is all about adventure and fun, it's good to know that you're constantly being protected too with Kia's ADAS (Advanced Driver Assistance Systems) – a series of intelligent safety innovations that help reduce many of the inherent dangers and stresses of driving on today's roads so as to make every journey hassle-free and more enjoyable.



Forward Collision-Avoidance Assist (FCA)

The new Kia e-Soul uses Kia's FCA system to avoid or mitigate accidents. The system monitors vehicle speed and the distance between the car and other vehicles, cyclists and pedestrians, and will warn the driver of any potential collision risk by activating a visual alert. Additionally, the steering wheel will give a sensory response; and if there is no driver reaction, the car will brake automatically.



Blind-Spot Collision Warning (BCW)(K3)

The Blind-Spot Collision Warning system has radar sensors that monitor your blind spots, and warns you of oncoming cars by displaying a symbol in the side-view mirror.

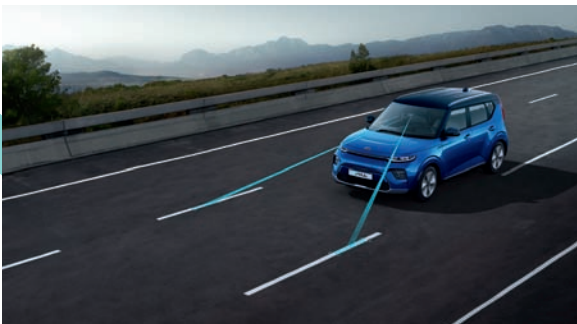
Blind-Spot Collision-Avoidance Assist Rear (BCA-R)

The BCA-R system uses radar sensors to monitor the area to the left and right of your car and warn you or even actively apply the brake if there's traffic approaching on either side.



Smart Cruise Control (SCC)

Using a camera and radar sensor at the front, SCC regulates both the vehicle speed and the distance to the car in front. If the vehicle ahead picks up the pace, the e-Soul accelerates up to the set speed, and if the vehicle in front slows down and the predetermined safe distance cannot be maintained, the system will reduce the speed, or even stop the car. A helpful feature, particularly in stop-and-go traffic.



Lane Keeping Assist (LKAS) with DAW and HBA

If you start drifting out of your lane, LKAS alerts you and even steers you back to your original position, while if you lose concentration when driving the 'Driver Attention Warning' (DAW) system will emit an audible alert and display a warning symbol. Additionally, the 'High Beam Assist' (HBA) feature automatically switches to low beam to avoid dazzling other drivers at night and then automatically switches back again.



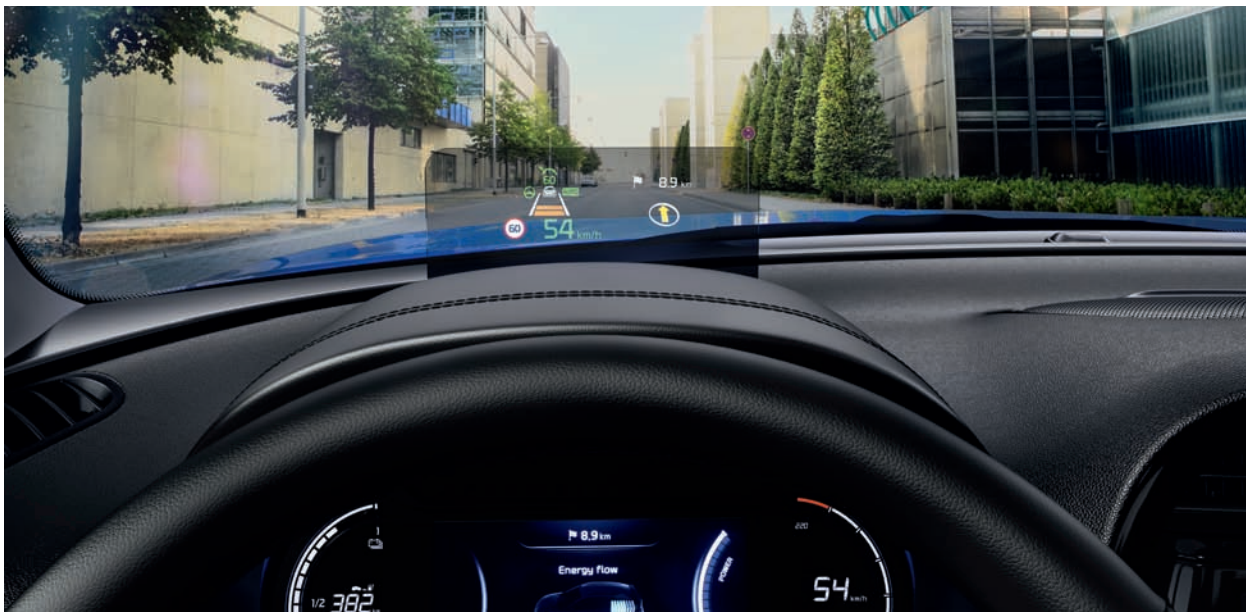
Lane Follow Assist (LFA)

This system takes a giant leap towards semi-automated driving. LFA controls acceleration, braking and steering depending on the vehicles in front. This makes driving in traffic jams easier and safer. The system uses camera and radar sensors to maintain a safe distance to the preceding vehicle and monitors road markings to keep your car in the centre of your lane. LFA works between 0 and 130 km/h.

CONVENIENCE

SAVOUR THE EXCITING

The new Kia e-Soul is proof that an electric car can combine character and excitement with the latest technology as well as all the advantages of a crossover to make all types of greener driving truly inviting.



Head-Up-Display (HUD)

Kia's innovative combiner-type Head-Up-Display (HUD) minimizes driver distraction by projecting key driving data like your speed, safety icons and turn-by-turn navigation directions directly onto the glass panel above the instrument cluster, and also provides audio information. (K3)



Drive Mode Selection

The Kia e-Soul adapts to your favourite driving style. Choose from 'Normal' mode, offering the full driving experience optimized for a typical driver, or 'Eco' or 'Eco+' mode to maximize the full electric range. Meanwhile, the 'Sport' mode, with its increased steering and motor response, maximizes the dynamic driving feel of the car.



Wireless Phone Charger

Enjoy convenient, cable-free charging by placing your compatible smartphone on the wireless phone charger on the centre console. The system even alerts you if a device is left on the charger when you exit the vehicle.



Sound Mood Lighting

For an outstanding driving experience, the new e-Soul comes with Kia's exciting 'Sound Mood Lighting' feature, which adapts to your music tastes perfectly by offering 8 different colours and 6 unique themes to choose from via the split navigation screen. What's more, not only does the intensity of the colour change depending on the music that is playing, but the brightness of the mood lighting also changes according to the audio sound level.



Heated Front Seats

Both the driver and front passenger seats are fitted with seat warmers to keep you cosy in winter.

RANGE AND OUTPUT

VALUE THE ENDURANCE

The new Kia e-Soul puts the charge back into driving electric by making it fun, stylish and good for the environment all at the same time. From the moment you press the start button you can look forward to a responsive electric engine boasting a maximum acceleration from 0 to 100 km/h in 7.6 seconds and a maximum speed of 167 km/h. Additionally, there are two driving distance ranges available on a single charge – either long range, offering up to 452 km, or mid-range, offering up to 277 km.

Energy-efficient Heat Pump system

The Kia e-Soul heat pump system helps save energy and increase the driving range by using recovered waste heat emitted from the coolant water for the electric powertrain.



Energy-saving individual air conditioning system

By selecting individual zones, air conditioning can be limited to the driver area only, lowering the amount of energy consumed for unoccupied zones and increasing the driving distance of the Kia e-Soul.

Battery Heating System

The battery pack situated underneath the Kia e-Soul has the option to include a battery heating system that warms up the battery floor in colder temperatures to ensure a smooth motor start. It also helps reduce loss of battery charge overnight due to cold weather conditions. Simply programme the battery heating system for a specific time using the 10.25" touch screen before you start your journey.



Programmable charging

You can use the convenient 10.25" touch screen to set the time to recharge your Kia e-Soul – for example, if you want to take advantage of cheaper night-time tariffs.

Electric Motor

Located under the cabin floor, the efficient, lightweight Kia e-Soul battery offers two flexible and energy-efficient solutions.

High Range and High Power Battery 64 kWh/motor 150 kWh		Mid-Range and Low Power Battery 39.2 kWh/motor 99 kWh	
Fast charge in 30 minutes (up to 50%)	Normal charge in 9.5 hours (up to 95%)	Fast charge in 30 minutes (up to 50%)	Normal charge in 6.5 hours (up to 95%)



Regenerative Braking

To ensure highly efficient driving and further increase the battery range, the new e-Soul offers next-generation regenerative braking with two different modes to suit the driving conditions. By selecting 'Single Pedal' driving or holding the left paddle shift lever behind the steering wheel for a minimum of 0.5 seconds, the car can be decelerated to a standstill without activating the brake pedal. Alternatively, releasing the paddle or activating the right paddle shift lever returns the system to regular mode.

INTERIOR GRADES

TREASURE THE EXCLUSIVE

With the Kia e-Soul the inside is as exciting as the outside, with vibrant interior options, carefully selected materials and bold trims – all designed for the ultimate in comfort and style.



K2 Black One-Tone Cloth and Leather

Black interior with knit and tricot fabric seats in stylish black, with grey stitching featuring satin chrome interior door handle and dark silver door garnish plus artificial-leather-covered armrest with grey stitching.



K3 leather with red colour pack

Luxury perforated black pure leather seats with red stitching, satin chrome interior door handle and red door garnish, plus artificial-leather-covered armrest with red stitching.

ADORE THE EXTERIOR

The Kia e-Soul is designed to celebrate the joy of nature and technology in complete harmony. It comes in a choice of 4 two-tone vibrant exterior combinations that mix colour with vibrant metallic shades. So whatever combination you choose, the experience will be yours to enjoy time after time.

Exterior Colours – Two-Tone



Clear White + Inferno Red (AH1)



Cherry Black + Inferno Red (AH5)



Inferno Red + Cherry Black (AH4)



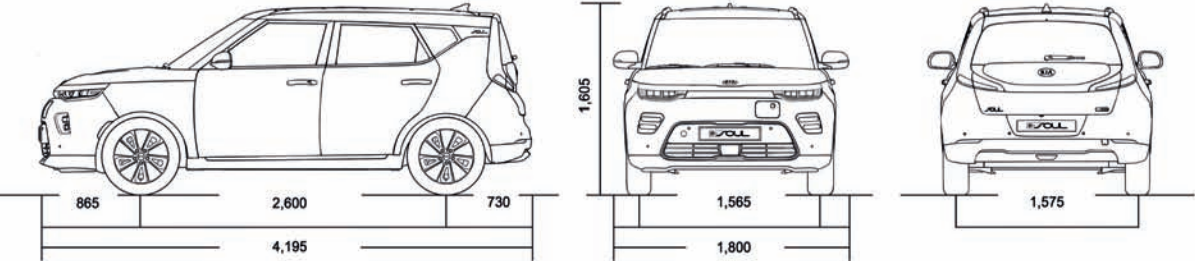
Neptune Blue + Cherry Black (SE2)

SPECIFICATIONS

ENJOY THE ELEMENT

The new Kia e-Soul comes with a host of specifications and options to give your electric driving experience even more character and personality.

Dimensions (mm)



Overall length	4,195
Overall width	1,800
Overall height	1,605
Wheelbase	2,600

Wheel tread (front)	1,565
Wheel tread (rear)	1,575
Overhang (front)	865
Overhang (rear)	730
Legroom (front/rear)	1,044/927
Headroom (front/rear)	1,013/988 (without sunroof) 973/988 (with sunroof)
Shoulder room (front/rear)	1,410/1,390
Cargo space capacity (l, VDA)	1,339

Technical specifications

		Mid-Range	Long Range
Electric motor	Type	Permanent Magnet Synchronous Motor	
	Max. power output (kW)	100	150
	Max. torque (Nm)	395	395
Battery	Type	LIPB (Lithium-Ion Polymer Battery)	
	Voltage (V)	327	356
	Capacity (kWh)	120	180
	Energy (kWh)	39.2	64
	Power (kW)	104	170
	Weight (kg)	317	457
Performance	Acceleration (sec./0 to 100 km/h)	9.9	7.9
	Maximum speed	155	167
	Pure Electric Range (km)	277	452
	Energy Consumption (kWh/km) (Combine)	145	157
	Kerb weight (kg) (max.)	1,593	1,682
	Gross vehicle weight (kg)	2,025	2,180

Wheels



17" Alloy Wheel

PEACE OF MIND

ALL THE PEACE OF MIND YOU'LL NEED

7-year vehicle warranty

This bumper-to-bumper warranty is free and transferable to subsequent owners, provided the car is regularly maintained in accordance with the servicing schedule.

5-year paint warranty & 12-year anti-perforation warranty

High-quality body paint ensures long-lasting protection and shine for your new Kia. It also comes with superior corrosion protection and a 12-year warranty against rust from the inside out.

Stay in touch with Kia

Visit www.kia.com for all the latest news and product launches. Find out more about Kia and our exciting new car range. Get updates on achievements in alternative fuel development, and discover what our Environment Research Centre is working on.

We're also involved in major sporting events: Kia is an official partner of both UEFA and FIFA. We sponsor the Australian Open and the tennis star Rafael Nadal. Here in Ireland, Kia is a proud sponsor of Community Games and The Kia Race Series.

Financing

Your local Kia dealer can help you with a financing plan that's best suited to your needs. Please ask for details.

Care-3

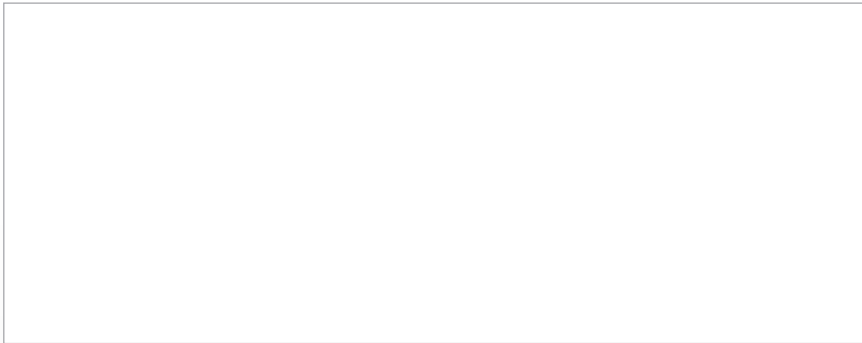
Our Care-3 plan means looking after your new Kia is a piece of cake. In order to keep your new Kia running like new, it has to be serviced every year. Now imagine having all the servicing your new Kia will need for the next three years sorted and paid for, in advance, and at a competitive price. Introducing Kia Care-3, the easy way to look after your new Kia, and protect your 7 year warranty.



The Kia 7-year warranty

Max. 150,000 km vehicle warranty. Valid in all EU member states (plus Norway, Switzerland, Iceland and Gibraltar). Deviations according to the valid guarantee conditions, e.g. for paint and equipment, subject to local terms and conditions.





Kia Motors Ireland,
Unit A8 Calmount Park,
Calmount Road,
Dublin 12,
Ireland

All information, illustrations and specifications are correct at the time of printing and are subject to change without notification. The models and specifications shown in this brochure may vary from the models available in your market. Due to the limits of the printing process, the car body colours shown may differ slightly from actual colours. Please contact your local Kia dealer for the most recent information.



The Power to Surprise