

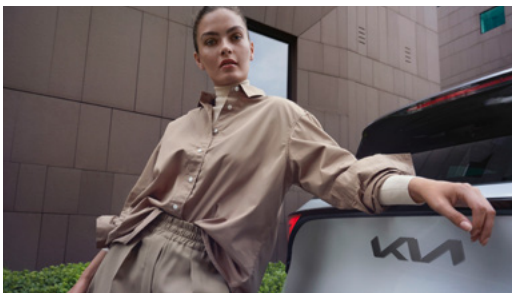
# The all-new Sportage



Movement that inspires



# Key Features



## K2 - Standard equipment includes

Available in Mild-Hybrid only

### Exterior design & features

- » 17" Alloys
- » Michelin Tyres
- » Tyre Mobility Kit (TMK)
- » Body Coloured Door Handles & Mirrors
- » Silver Painted Front Bumper & Door Garnish
- » Black 'Diamond' Mesh Radiator Grille
- » Silver Painted Rear Skid Plate
- » Electrically Folding, Adjustable & Heated Door Mirrors with Indicators Lights
- » Roof Rails
- » Tinted Glass (Front Windows & Windshield)
- » Tinted Glass (Rear Windows & Tailgate)
- » All-round Electric Windows

### Lighting

- » LED Headlights with Low & High Projection
- » LED Daytime Running Lights
- » Rear Combination Lights (LED & Bulb)
- » LED Position Lights
- » Front Fog Lamps
- » Rear Fog Lamps
- » LED High Mounted Brake Light

### Interior, seating & steering

- » Black Premium Cloth Seat Upholstery
- » Metallic Finish Interior Door Handles
- » Remote Folding Rear Seats
- » 40:20:40 Split Rear Folding Seats
- » ISOFIX Child Seat Top Tethers & Anchor Fixings Outer Rear Seats
- » Artificial Leather Wrapped Steering Wheel

### Multimedia & information

- » 8" Touchscreen Infotainment
- » 4.2" Integrated LCD Driver Display Screen
- » Multi-device Bluetooth® Connection with Voice Recognition & Music Streaming
- » Apple CarPlay™ and Android Auto™ with Voice Control
- » 6 Speaker Audio System
- » Trip Computer - Distance, Fuel Consumption, Average Speed
- » Front USB Charge Port & 12V Socket in Centre Console

### Security

- » Driver Controlled Central Door Locking
- » Remote Central Door Locking with Fold-away Key
- » Visible Vehicle Identification Number (VIN)
- » Door Deadlocks
- » Interior Door Lock/Unlock Function
- » Child Safety Rear Door Locks
- » Speed Sensing Auto Door Locking

### Driver Assistance

- » Forward Collision Avoidance Assist (FCA) - City/Pedestrian/Cyclist
- » Lane Keep Assist System (LKAS)
- » Lane Follow Assist (LFA)
- » Parking Distance Warning Sensors (Reverse and Forward)
- » Reversing Camera System with Dynamic Guidelines
- » Cruise Control & Speed Limiter
- » High Beam Assist (HBA)
- » Auto-dimming Rear-view Mirror
- » Low Washer Fluid Warning
- » Rain Sensing Front Wipers
- » Tyre Pressure Monitoring System (TPMS)
- » Manual Speed Limit Assist (MSLA)
- » Intelligent Speed Limit Assist (ISLA)
- » Driver Attention Warning (DAW)
- » Electronic Parking Brake (EPB) With Auto Hold Function

### Ventilation

- » Dual-zone Automatic Air Conditioning
- » Automatic Window Defog System

### Active Safety System

- » Anti-Lock Braking System (ABS) with Electronic Brakeforce Distribution (EBS)
- » Electronic Stability Control (ESC) with Downhill Brake Control (DBC)
- » Hill-Start Assist Control (HAC)
- » Emergency Stop Signalling (ESS)
- » Trailer Stability Assist (TSA)
- » Multi-Collision Brake (MCB)

### Passive safety

- » Twin Front Airbags
- » Twin Front Side Airbags
- » Twin Curtain Airbags with Roll-over Sensor
- » All-round 3-point Seatbelts
- » Read Door Child Locks
- » Height Adjustable Front Seatbelts





# K3 - Additional equipment includes

Available in Mild-Hybrid, Hybrid & Plug-in Hybrid

### Exterior features

- » Exterior design & features
- » 18" Alloys
- » Continental Tyres
- » 19" Alloys - PHEV only
- » Michelin Tyres - PHEV only
- » Privacy Glass (Rear Windows & Tailgate)
- » All-round Electric Windows with Driver's Auto Up/Down & Safety Function

### Lighting

- » LED Front Fog Lights
- » LED Rear Combination Lights
- » LED Front Fog Lights

### Interior, seating & steering

- » Black Saturn Cloth & Faux Leather Seat Upholstery
- » Driver Power Adjusted Seat with Lumbar Support
- » Front Passenger Power Adjusted Seat
- » Heated Front Seats
- » Heated Steering Wheel
- » Shift by Wire Rotary Dial - Forward, Reverse, Park - HEV/PHEV only
- » High Gloss Finish Center Fascia - HEV/PHEV only
- » Paddle Shifters - HEV/PHEV only

### Multimedia & information

- » 12.3" Curved Touchscreen Navigation
- » Telematics System with Kia Connect (UVO)
- » Rear USB Charger Ports X2
- » Multi-touch display

### Security

- » Engine Start/Stop Button with Smart Entry System - PHEV only

### Driver Assistance

- » Forward Collision Avoidance Assist (FCA) - Turning - HEV/PHEV only
- » Navigation Based Smart Cruise Control with Stop & Go Functionality - HEV/PHEV only
- » Highway Driving Assist (HDA) - HEV/PHEV only



# K4 - Additional equipment includes

Available in Mild-Hybrid & Plug-in Hybrid

### Exterior design & features

- » Matt Chrome Coated Front Bumper & Door Garnish
- » High Gloss Black 'Diamond' Mesh Radiator Grille
- » Hyper Silver Painted Rear Skid Plate

### Lighting

- » Dual LED Headlights with Intelligent Adaptive High Beams

### Interior, seating & steering

- » Ice Coffee Beige Leather Seat Upholstery
- » Driver Power Adjusted Memory Seat with 2-way Electric Lumbar
- » Heated Rear Seats
- » Ventilated Front Seats

### Multimedia & information

- » 12.3" Curved Driver Display Screen
- » Wireless Mobile Phone Charger

### Security

- » Engine Start/Stop Button with Smart Entry System



# GT-line - Additional equipment includes

Available in Mild-Hybrid only

### Exterior design & features

- » 19" GT-line Alloys
- » Body Colour Front Bumper & Door Garnish
- » High Gloss Black 'Diamond' Mesh GT-line Radiator Grille
- » Chrome Coated Front & Rear Skid Plate
- » Gloss Black Door Mirrors
- » Panoramic Sunroof (Electric One-Touch with Safety Function)

### Interior, seating & steering

- » Suede & Pressed Faux Leather Seat Upholstery
- » Aluminium Pattern Finish to Center Fascia and Door Garnish
- » D-Shaped Perforated Leather Wrapped Steering Wheel

### Driver Assistance

- » Smart Power Tailgate with Adjustable Height



All information and specifications are correct at the time of printing and are subject to change without notification. Please consult with your dealer to ensure that the vehicle you order has the specification you require.



Technical specifications

	'K3 HEV'	'K3/ K4 PHEV'	'K2/ K3/ K4/ GT-line'
Engine	1.6 T-GDi HEV 2WD	1.6 T-GDi PHEV 4WD	1.6 CRDi MHEV Diesel 2WD
Battery	1.49kWh Li-ion polymer battery	13.8kWh Li-ion polymer battery	-
Battery			
Hybrid Type	TMED	TMED	LIPB
Electric Range EV Mode (km)	-	70	-
Drive Motor Max Power(kW)	44.2	66.9	12.5
Capacity (Ah)	5.5	38.3	9.7
Nominal Voltage (V)	270	360	45
Battery Weight (kg)	37.5	140	12
Battery Position	Under rear seat	Under Cabin Area	-
Charging			
3-pin AC Emergency Charger	-	AC single-phase charging up to 2.3kW	-
3-pin AC Emergency Charge Time (2.3kW)	-	5hrs 45mins (10% → 100%)	-
Type 2 AC Charger	-	AC single-phase charging up to 7.2kW	-
Type 2 AC Charge Time (7.2kW)	-	1hrs 45mins (10% → 100%)	-
Charging Cables			
Type 2 to Type 2 charger (5m cable length)	-	●	-
WLTP Fuel Consumption, Emissions And Performance Informationd			
Maximum speed (km/h)(EV Mode)	193	191 (140)	180
Acceleration 0-100km/h (seconds)	8	8.2	11.4
Fuel Consumption - Low (l/100km)	5.9	-	5.5
Fuel Consumption - Medium (l/100km)	4.8	-	4.8
Fuel Consumption - High (l/100km)	4.9	-	4.2
Fuel Consumption - Extra High (l/100km)	6.9	-	5.6
Fuel Consumption - Combined (l/100km)	5.7	-	5.0
Fuel Consumption - Wighted Combined (l/100km)	-	1.1	-
Regulated Emission Standard	Euro-6d	Euro-6d	Euro-6d
Carbon Dioxide (CO²) Emissions (g/km)	129	25	131-134
Electric Energy Consumption, Weighted (Wh/km)	-	169	-
Electric Energy Consumption, Weighted (kWh/100km)	-	16.9	-
Electric Range , EAER Weighted (km)	-	70	-
Electric Range City, EAER Weighted (km)	-	78	-



The Sportage

Please note that whilst every care has been taken to ensure that these specifications are current and correct, occasionally specification changes occur that may not be reflected in this document. Please check in the showroom and with your dealer that your chosen model has your required specification.

MHEV - Mild-Hybrid    HEV - Hybrid    PHEV - Plug-in Hybrid

Technical specifications

	'K3 HEV'	'K3/ K4 PHEV'	'K2/ K3/ K4/ GT-line'
Engine	1.6 T-GDi HEV 2WD	1.6 T-GDi PHEV 4WD	1.6 CRDi MHEV Diesel 2WD
Drivetrain			
Cubic capacity	1,598	1,598	1,598
Max. power, ps at rpm	230 / 5500	265 / 5500	136 / 4000
Max. torquer, Nm at rpm	350/ 1500-4500	350/ 1500-4500	320/ 2000-2250
6 speed Manual	-	-	●
6 speed Automatic	●	●	-
Gear Ratios			
1st	4.639	4.639	3.769
2nd	2.826	2.826	2.040
3rd	1.841	1.841	1.294
4th	1.386	1.386	0.951
5th	1.000	1.000	0.723
6th	0.772	0.772	0.569
Reverse	3.385	3.385	3.583
Final Gear Ratio	3.320	3.368	4.467
Suspension & Tyres			
Front suspension	McPherson	McPherson	McPherson
Rear suspension	Multi-Link	Multi-Link	Multi-Link
17" tyres	-	-	215/65R17
18" tyres	235/55R18	-	235/55R18
19" tyres	-	235/50R19	235/50R19
Fuel			
Fuel Type	Petrol HEV	Petrol PHEV	Diesel
Fuel tank capacity, litres	52	42	54
Selective Catalytic Reduction (SCR)	-	-	●
SCR tank capacity, litres	-	-	10
Regulated Emissions			
Carbon Monoxide (mg/km)	128.7	118.2	107.2
Total Hydrocarbons (mg/km)	11	9.9	-
Nitrogen Oxide (mg/km)	28.3	6.2	18.7
Total Hydrocarbons + Nitrogen Oxide (mg/km)	-	-	57.3
Particulate Matter (mg/km)	0.20	0.20	0.09



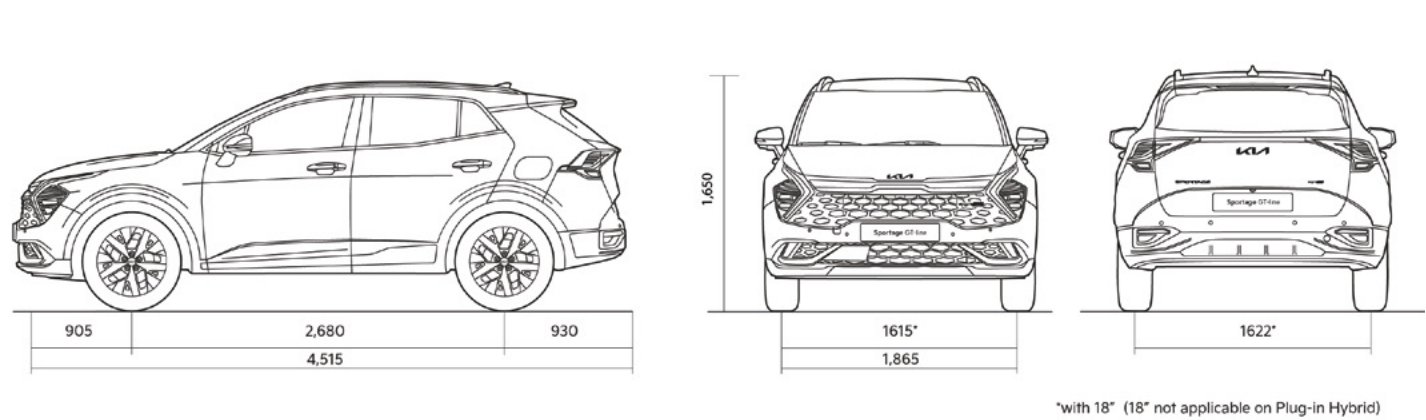
The Sportage

Please note that whilst every care has been taken to ensure that these specifications are current and correct, occasionally specification changes occur that may not be reflected in this document. Please check in the showroom and with your dealer that your chosen model has your required specification.

MHEV - Mild-Hybrid    HEV - Hybrid    PHEV - Plug-in Hybrid

# Technical specifications

	'K3 HEV'	'K3/ K4 PHEV'	'K2', 'K3', 'K4'	'GT-line'
Dimensions, Weight & Capacity				
Length (mm)	4,515	4,515	4,515	4,515
Width (mm)	1,865	1,865	1,865	1,865
Height (mm)	1,650	1,650	1,650	1,650
Wheelbase (mm)	2,680	2,680	2,680	2,680
Overhang front / rear (mm)	905 / 930	905 / 930	905 / 930	905 / 930
Head room first row / second row	1,008 / 998	1,008 / 998	1,008 / 998	1,008 / 998
Shoulder room first row / second row	1,461 / 1,414	1,461 / 1,414	1,461 / 1,414	1,461 / 1,414
Leg room first row / second row	1,052 / 996	1,052 / 996	1,052 / 996	1,052 / 996
Gross vehicle weight limit (kg)	2,175	2,415	2,145	2,145
Kerb weight (kg)	1,704	1,936	1,642	1,668
Gross train weight (kg)	3,825	3,765	4,095	4,095
Maximum braked trailer weight (kg)	1,650	1,350	1,950	1,950
Maximum un-braked trailer weight (kg)	750	750	750	750
Maximum tow ball weight (kg)	100	100	100	100
Luggage compartment capacity, rear seats upright, litres	587	540	526	526
Luggage compartment capacity, rear seats folded, litres	1,776	1,715	1,715	1,715



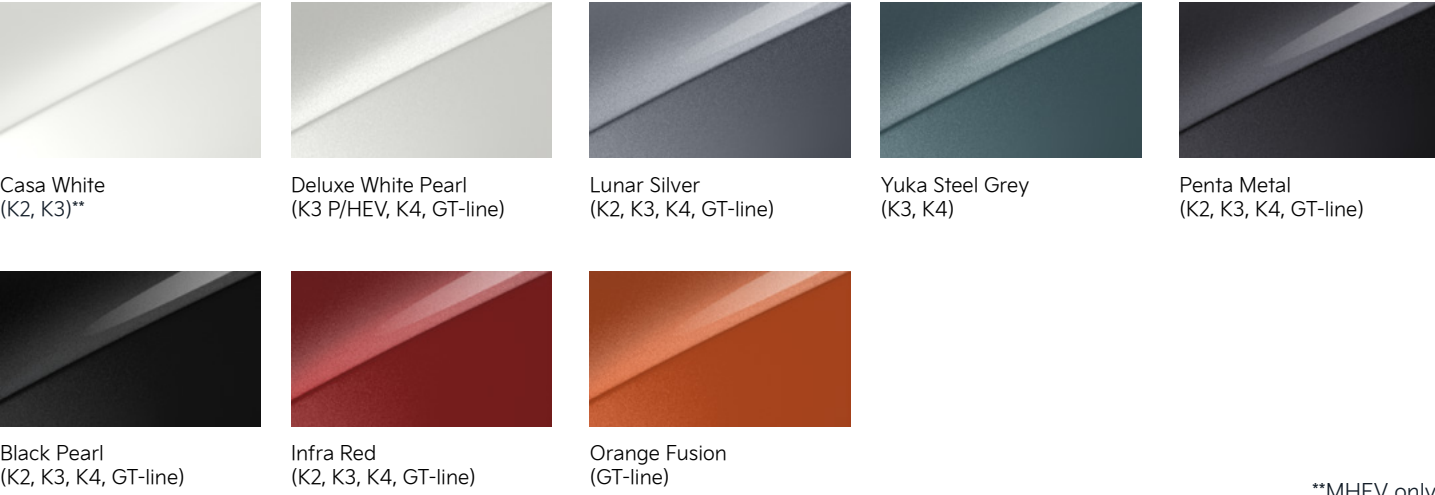
## The Sportage

Please note that whilst every care has been taken to ensure that these specifications are current and correct, occasionally specification changes occur that may not be reflected in this document. Please check in the showroom and with your dealer that your chosen model has your required specification.

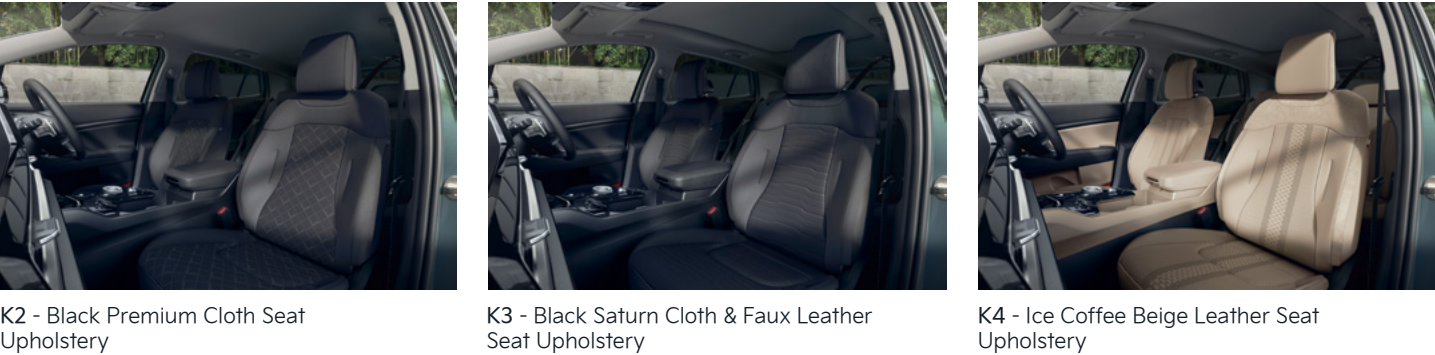
MHEV - Mild-Hybrid   HEV - Hybrid   PHEV - Plug-in Hybrid

# Model Comparison

## EXTERIOR BODY COLOURS



## INTERIOR TRIM



## WHEEL DESIGN



Please note that whilst every care has been taken to ensure that these specifications are current and correct, occasionally specification changes occur that may not be reflected in this document. Please check in the showroom and with your dealer that your chosen model has your required specification. Images are for illustrative purposes only and may not be to Irish specification.

MHEV - Mild-Hybrid   HEV - Hybrid   PHEV - Plug-in Hybrid





**The Kia 7-year warranty**

Max. 150,000 km vehicle warranty. Valid in all EU member states (plus Norway, Switzerland, Iceland and Gibraltar). Deviations according to the valid guarantee conditions, e.g. for paint and equipment, subject to local terms and conditions.

**Peace of mind**

# Even more peace of mind.

**7-year vehicle warranty**

Every Kia benefits from a 7-year/150,000 km new car warranty. This bumper-to-bumper warranty is free and transferable to subsequent owners, provided the car is regularly maintained in accordance with the servicing schedule.

**Kia 7-Year EV/HEV/PHEV Battery Warranty**

When you switch to a Kia Electric (EV), Hybrid Electric (HEV) or Plug-in Hybrid (PHEV), it's good to know that our batteries are built to have a long life\*. That's why at Kia we are happy to offer you a 7-year warranty either from initial registration or 150,000 km whichever comes first. Even for our low voltage (48 V and 12 V) batteries in Kia Mild-Hybrid electric vehicles (MHEVs), our Kia warranty covers you for a period of 2 years from initial registration regardless of mileage. All of which means you can simply enjoy the experience of driving our eco friendly range, every day for years to come.

\* Kia high voltage lithium ion battery-units in electric vehicles (EV), hybrid electric vehicles (HEV) and plug-in hybrid electric vehicles (PHEV) are built to have a long life. These batteries are covered by the Kia warranty for a period of 7 years from initial registration or 150,000 km, whichever comes first. For low voltage batteries (48 V and 12 V) in mild-hybrid electric vehicles (MHEV), the Kia warranty covers a period of 2 years from initial registration regardless of mileage. For EVs and PHEVs only, Kia guarantees a 70% capacity of the battery. Capacity reduction of the battery in HEV and MHEV is not covered by the warranty. To minimize possible capacity reduction, consult the Owner's Manual. Find more information about Kia warranty at [www.Kia.com](http://www.Kia.com).

**Kia Service Plan**

Our Kia Service Plan means looking after your new Kia is a piece of cake. In order to keep your new Kia running like new, it has to be serviced every year. Now imagine having all the servicing your new Kia will need for the next three years sorted and paid for, in advance, and at a competitive price. Introducing Kia Service Plan, the easy way to look after your new Kia, and protect your 7 year warranty.

**Stay in touch with Kia**

Visit [www.kia.com](http://www.kia.com) for all the latest news. Find out more about Kia and our exciting new car range. Get updates on achievements in alternative fuel development, like liquid gas, hybrid and fuel cell technology. Or discover what our Environment Research Centre is working on. We're also involved in major sporting events: Kia is an official partner of both UEFA and FIFA. We sponsor the Australian Open and the tennis star Rafael Nadal.

**KiaCredit.ie**

Kia Ireland has teamed up with Bank of Ireland Finance to offer Kia customers affordable HP and PCP finance packages across the entire Kia range. Your local Kia Dealer will explain in details the options available. For indicative costs, log on to our finance calculator at [kiafinance.ie](http://kiafinance.ie).

**KiaService.ie**

Is your current Kia car due a service? Log on to [kiaservice.ie](http://kiaservice.ie) to book your service at your favourite Kia Dealer. Pick your preferred time and get a cost estimate upfront. It couldn't be easier.



All information and specifications are correct at the time of printing and are subject to change without notification. However some of the models and features shown in this brochure may vary from the models and equipment available here in Ireland. Please consult with your dealer to ensure that the vehicle you order has the specification you require. Due to the limits of the printing process, the car body colours shown may differ slightly from actual colours.

Kia Ireland,  
Unit A8 Calmount Park,  
Calmount Road,  
Dublin 12,  
Ireland



Movement that inspires