



The new Kia

The Power to Surprise

stinger





FIND THE STINGER THAT SUITS YOUR STYLE

Inspired by the classic Gran Turismo and engineered with the latest performance technology, all Kia Stinger model lines guarantee a stirring experience: from the GT Line with refined, sporty details, through to the GT with its incredibly powerful twin-turbo V6 engine and the most exclusive features.



BE INSPIRED ENTER THE DRIVER'S REALM

Pure yet exclusive. The Stinger takes its inspiration from sporty GT styling paired with the latest in driver-assistance technology. The striking interior features circular aircraft-style vents, metal-ringed gauges and satin chrome trim. From the low-slung driver's seat fitted with soft nappa leather as standard on GT, you'll enjoy access to essential information – courtesy of the supervision cluster in the instrument panel or the optional Head-Up Display. The 8" navigation screen in the centre console covers all your multimedia needs.



Head-Up Display (HUD)

To help keep your eyes on the road, the height-adjustable 8" colour Head-Up Display (HUD) shows key driving information reflected on the windscreen. It includes speed, turn-by-turn navigation, smart cruise control settings and Blind Spot Detection information.



8" screen navigation system The sleek navigation system comes with a large 8" floating touchscreen for effortless multimedia access. It keeps you on track with navigation, real-time updates and much more. Plus, it also connects to the sound system.

STAY TUNED TO YOUR WORLD



androidauto

Android Auto™ is designed to keep you perfectly connected to your phone – while minimizing distractions so you stay safe on the road. The simple, intuitive interface lets you access features like Google Maps, apps, music and voice control, and automatically organizes info into simple cards that appear just when they're needed.



Apple CarPlay™ is a smart, safe way to use your iPhone while driving. It takes all the things you might want to do, and puts them into your Stinger's display, so you can get directions, make a call and listen to music – all while staying focused on the road.

When the open road beckons, the Stinger helps you focus on enjoying the ride thanks to sophisticated, convenient technology.

From the 8" screen navigation system to the supervision cluster – all your vital sources of information are close at hand and intuitive to use.



7" screen supervision cluster The high-definition 7-inch TFT LCD in the supervision cluster provides customisable data essentials – from average fuel economy to turn-by-turn navigation information.

Wireless smartphone charger Enjoy convenient, cable-free charging and place your compatible smartphone on the optional wireless phone charger on the centre console. It even alerts you if a device is left on the charger, when you exit the Stinger.

LET INTELLIGENCE GUIDE YOU

DriveWise technologies combine Kia's ADAS (Advanced Driver Assistance Systems), a series of intelligent safety innovations that help reduce many of the inherent dangers and stresses of driving on today's roads. Ultimately, they lead to improved on-road safety and hassle-free, enjoyable driving.

**DRIVE
WISE**



Safety

DriveWise technologies recognise dangers at an early stage thanks to an intrinsic system of sensors and cameras. It is designed to improve safety by pre-emptively eliminating the risk of accidents.



Convenience

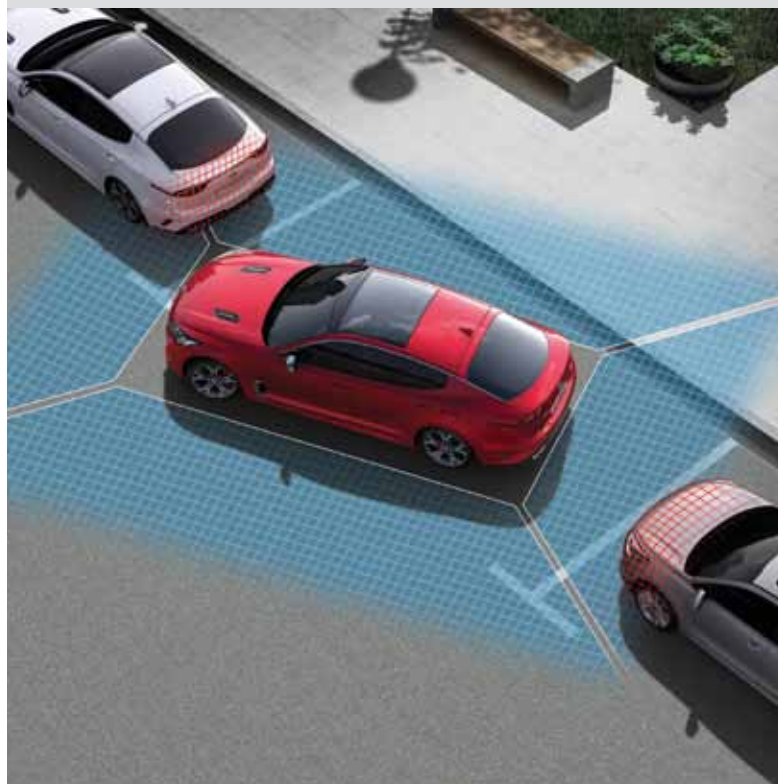
DriveWise technologies are designed to offer as much information as you want, and as little as you need to maximise convenience. It allows you to stay autonomous and to focus on essential tasks instead of more tiresome chores.



Efficiency

DriveWise technologies help improve quality of life by supporting more fuel- and time-efficient driving.

Parking assist systems



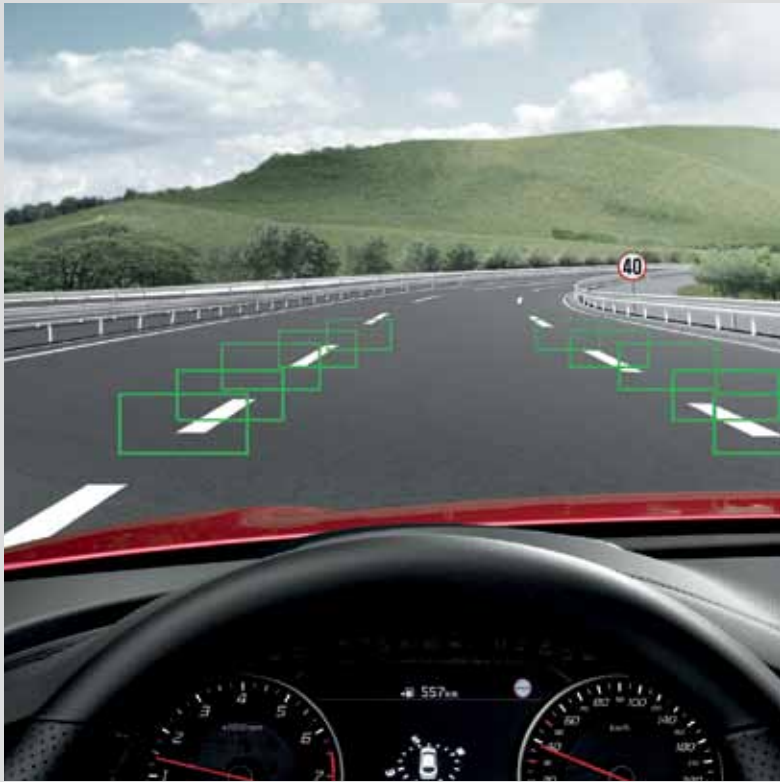
Around View Monitor (AVM) with Parking Guidance

This intuitive system combines four wide-angle images from cameras at the front, rear and sides of the vehicle, to give you a comprehensive bird's eye view of the space around the vehicle while parking or moving at speeds below 20 km/h.

Parking Distance Warning-Reverse/ Forward (PDW R/F)

To help you park safely and confidently, PDW uses ultrasonic sensors mounted on the front and rear bumpers to warn of any obstacles. These warnings can help you avoid contact and position the wheels properly when manoeuvring the Stinger into tight spaces.

Driving assist systems



Smart Cruise Control with Stop & Go (SCC w/ S&G)

This system uses a radar sensor at the front of the vehicle to monitor the distance to the vehicle ahead. If the vehicle ahead speeds up, the Stinger accelerates up to the set speed or one of four preset following distances. If the vehicle in front slows down and the predetermined safe distance cannot be maintained, the system will reduce the speed, or even bring the car to a stop.

Forward Collision-Avoidance Assist (FCA)

FCA uses camera and radar data to detect vehicles or pedestrians in the vehicle's path and takes action to help avert a potential collision. If it detects a collision risk, it warns the driver, and can even apply the brakes automatically to minimise any damage.

Lane Keeping Assist (LKA)

When you start drifting out of your lane, LKA alerts you and even steers you back to your original position.

Driver Attention Warning (DAW)

The system detects when you lose concentration while driving, by monitoring vehicle and driver behaviour. If it's time to take a break, DAW emits an audible alert and displays a warning symbol on the instrument panel.

Intelligent Speed Limit Warning (ISLW)

ISLW helps you stay within the speed limits. Using the camera on the windscreen, it reads speed limits and overtaking restrictions, and displays the information clearly on the navigation screen and cluster.

GO WITH THE FLOW CUT THROUGH THE AIR

Starting with a clean slate, inspired by classic Gran Turismo styling, the creation of the Kia Stinger offered a treasure of opportunities. The result combines iconic beauty with the latest in aerodynamic technology and noise minimisation. While the exterior is shaped to minimise drag and to maximise stability and control, the structure and interior is designed to isolate passengers from noise and vibrations.





Front bumper with integrated air curtain The Stinger's breathtaking front serves a clear purpose; the front bumper's integrated air curtain helps manage airflow, reduce drag and direct cooling air to the radiator and front brakes. Equally, the lower apertures direct airflow to the wheel wells, which reduces drag and helps cool the brakes. Aside from fuel savings and noise reduction, the front design also contributes to the car's stability. Please note that the Brembo brakes are only with the GT.



Rear integrated diffuser An integrated diffuser panel under the rear bumper helps control airflow and prevents the dual exhaust pipes from creating drag under the car. It pays homage to racing diffusers which lower the turbulence that can occur when low-pressure air under the car meets higher pressure ambient air.



Trunk lid with spoiler effect To improve stability and optimise airflow that forms behind the Stinger when travelling at higher speeds, the trailing edge of the trunk lid is arched, providing a spoiler effect – and a stunning finale to the Stinger silhouette.



Multiple undercovers and aerodynamic effects While the aerodynamic aspects of the silhouette are plain to see, the Stinger also boasts vital drag reduction features that improve airflow underneath the car. It uses a system of sturdy undercovers, below the engine and transmission, each side of the cabin, and each side of the rear suspension. These covers reduce the flow resistance on the underside of the body when travelling at higher speeds.



Noise-Vibration-Harshness (NVH) Inside and out, every element of the Stinger has been engineered to reduce noise, vibrations and harshness. The engine area and dashboard feature extra insulation, while the joints of body pillars and frame boast additional padding. New insulation materials, a reconfigured exhaust, and stiffened rear cross-member also add to the quiet, smooth ride. Side mirrors and doors are sculpted to minimise noise and drag. Plus, rear-wheel drive models use a Centrifugal Pendulum Absorber to reduce vibration.



Eight-speed automatic transmission

Quick and seamless gear changes are the hallmarks of the eight-speed automatic transmission. While designed to maximise fuel efficiency, a Centrifugal Pendulum Absorber limits noise and vibration.

ACCELERATE YOUR HEART BEAT

In the new Stinger, all the benefits of rear-wheel drive – greater acceleration, higher agility and better handling – come together for stunning effect. Even at low engine speed, the rear-wheel propulsion delivers a uniquely sporty driving experience. Four-wheel drive for even greater control in poor road conditions is also available, while eight-speed automatic transmission ensures smooth gear changes.

3.3 I V6 twin-turbocharged engine



0–100 km/h

Max. speed

Max. power

with the 3.3 T-GDI engine

The most powerful D-CVVT V6 petrol engine with a twin-turbocharger in the Kia range responds and accelerates beautifully, while achieving considerable torque over a broad rpm range. Bespoke intake and exhaust systems also add to the exceptional performance.

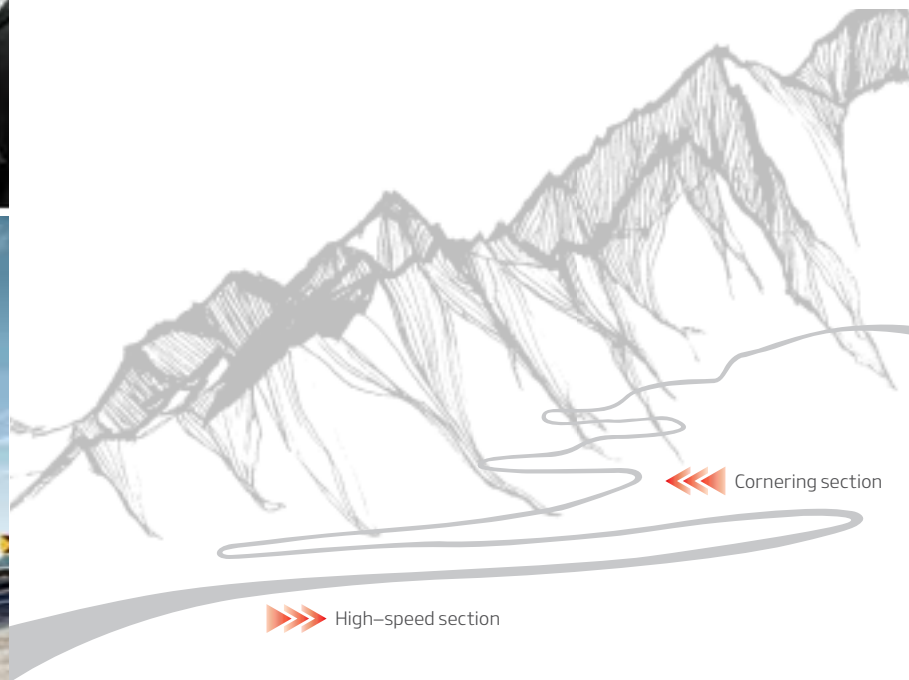
2.2 CRDi engine This 200 PS 2.2 CRDi diesel engine combines a sprightly performance capable of 230 km/h top speed with efficiency and reduced noise and vibration.





SHAPE EVERY CORNER YOUR WAY

As a true performance car, you'll enjoy the responsiveness the Stinger displays on the road. Equally, it offers intelligent support whenever you need or demand it. Choose between five Electronic-Controlled Suspension drive modes to suit your taste and driving conditions, each with its own coordinated combination of dynamic characteristics.



Launch control This exclusive feature on the GT momentarily suspends ESC to ensure rapid acceleration from standstill with minimal wheel slip and maximum torque control.





► **Strong tailgate opening**

The tailgate features highly robust box-section joints between rear quarter panels, back panel and hatch rim to improve stiffness.

► **Rear wing reinforcement connections**

Reinforced Rear wing above the rear wheels now join the body at a higher point for improved stiffness.

► **Stronger underbody rail materials**

AHSS reinforces the safety cage in seat cross-members, vertical members and side sill inner panels.

► **Stiff sub-frame panel joints**

Within sub-frame side members, bulkheads join four surfaces instead of the conventional three, maximising stiffness.



Advanced High Strength Steel (AHSS) and hot-stamped steel

The new Kia Stinger is fitted extensively with Advanced High Strength Steel (AHSS) for exceptional rigidity. It also features hot-stamping technology to further increase robustness in more crucial areas, including single-piece door-side frame sections that help disperse impact forces in a collision.

21 parts
hot-stamped
components

173 metres
advanced
adhesives

PROTECT YOURSELF WITH THE BEST

The Kia Stinger's thrill of driving is matched by the exceptional level of protection this fastback offers. Every part of the chassis and body is designed to keep passengers safe, working hand-in-hand with optimised aerodynamics, performance and ride comfort.

Seven airbags To help protect occupants and potentially reduce injuries in the event of a collision, the Stinger offers driver and front passenger airbags, two front-side airbags, two side-curtain airbags, and a driver's knee airbag as standard.

Knee airbag The driver's knee airbag helps minimise impact and injury to the driver's knees in the event of a collision.

Active Hood Lift System (AHLS) To help protect pedestrians from serious head injury in the event of a collision, AHLS can detect impact with a pedestrian and automatically raise the hood. This allows the deformation space to be increased and the risk of injury to be considerably reduced.





ALL THE PEACE OF MIND YOU'LL NEED



7-year vehicle warranty

This bumper-to-bumper warranty is free and transferable to subsequent owners, provided the car is regularly maintained in accordance with the servicing schedule.

5-year paint warranty & 12-year anti-perforation warranty

High-quality body paint ensures long-lasting protection and shine for your new Kia. It also comes with superior corrosion protection and a 12-year warranty against rust from the inside out.

Stay in touch with Kia

Visit www.kia.com for all the latest news. Find out more about Kia and our exciting new car range. Get updates on achievements in alternative fuel development, like liquid gas, hybrid and fuel cell technology. Or discover what our Environment Research Centre is working on.

We're also involved in major sporting events: Kia is an official partner of both UEFA and FIFA. We sponsor the Australian Open and the tennis star Rafael Nadal.

Financing

Your local Kia dealer can help you with a financing plan that's best suited to your needs. Please ask for details.

The Kia 7-year warranty

7-year/150,000 km new car warranty. Valid in all EU member states (plus Norway, Switzerland, Iceland and Gibraltar), subject to local terms and conditions.





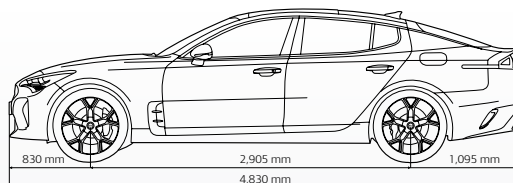
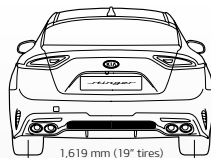
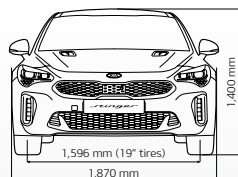
The Kia 7-year/150,000 km new car warranty. Valid in all EU member states (plus Norway, Switzerland, Iceland and Gibraltar), subject to local terms and conditions.

www.kia.com

Technical specifications

Engines	2.2 CRDi engine	3.3 T-GDI engine
Transmission	8-speed automatic	8-speed automatic
Engine type	Turbocharged four-cylinder in-line	Twin-turbocharged V6
Driveline	Rear-wheel drive	Rear-wheel drive (RHD)
Fuel Type	Diesel	Petrol
Displacement (cc)	2,199	3,342
Max. Power (ps/rpm)	200/3,800	370/6,000
Max. Torque (Nm / rpm)	440/1,750–2,750	510/1,300–4,500
Performance		
0–100 km/h (seconds)	7.6	4.9
80–120 km/h (seconds)	5.9	3.3
Top Speed (km/h)	230	270
CO ₂	18"	19"
CO ₂ Combined (l/100km)	154	225
Fuel consumption (urban) (l/100km)	7.3	13.6
Fuel consumption (extra-urban) (l/100km)	5.0	7.8
Fuel consumption (combined) (l/100km)	5.8	9.9
Cargo capacity		
Curb weight (max) (kg)	1,838	1,832
Towing capacity (Braked) (kg)	1,500	
Towing capacity (Unbraked) (kg)	750	
Trunk Volume (seat up / seats down)	406/1,114	
Fuel tank capacity	60	

Dimensions													
Overall length (mm)			4,830	Overall width (mm)		1,870	Overall height (mm)		1,400	Wheelbase (mm)		2,905	
Wheel tread (mm)	Front	17": 1,592 / 18": 1,596 / 19": 1,596			Head room (mm)	Front	974	Leg room (mm)	Front	1,083	Shoulder room (mm)	Front	1,433
	Rear	17": 1,643 / 18": 1,647 / 19": 1,619				Rear	939		Rear	925		Rear	1,391



Exterior body colours

Panthera Metal (P2M)



Aurora Black Pearl (ABP)



Hi Chroma Red (H4R)



Micro Blue (M6B)



Alloy Wheels



225/45R
18" alloy wheel
(GT Line)



225/40R (front)
255/35R (rear)
19" alloy wheel (GT)

Kia Motors Ireland
Unit A8, Calmount Park
Calmount Road, Dublin 12
Tel: 01 460 1288
www.kia.com

All information, illustrations and specifications are correct at the time of printing and are subject to change without notification. The models and specifications shown in this brochure may vary from the models available in Ireland. Due to the limits of the printing process, the car body colours shown may differ slightly from actual colours. Please contact your local Kia dealer for the most recent information.



The Power to Surprise