



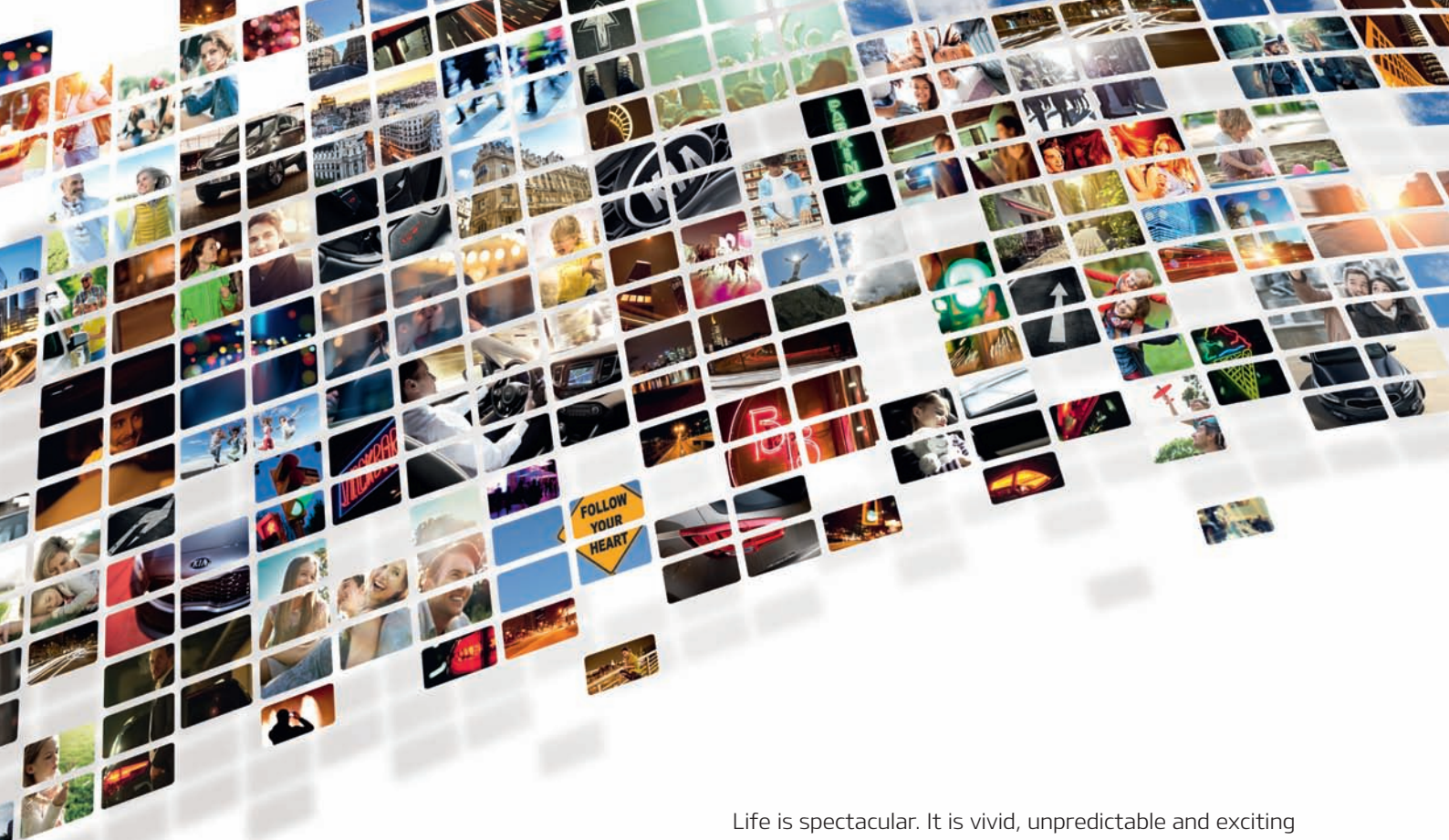
The new Kia

STONIC



The Power to Surprise





Life is what you make of it.
Welcome to the world of Kia.

Life is spectacular. It is vivid, unpredictable and exciting in all its facets. Whatever will happen, wherever you will go and whatever you will discover, Kia is with you.

We at Kia have dedicated our lives to making a contribution towards building a better future. That is why we develop and build cars which help you to discover and enjoy new horizons. Cars with stunning designs, advanced technologies and smart solutions. Cars with our remarkable 7-year warranty as proof of our outstanding quality. Whatever we do, we are driven by one mission: to always exceed your expectations. We call it 'The Power to Surprise'.

Now, we invite you to take a closer look and allow us to surprise you.



Grasp every moment



Created for drivers who grasp every moment, push every boundary and relish every adventure, the Kia Stonic brings fresh excitement and a free spirit to the crossover experience. With its sleek muscular body, sporty compact styling, exceptional handling and outstanding performance – the new Kia Stonic is for those who always demand more from life.







Escape the everyday



From first glance the new Kia Stonic sets its own rules, with looks that challenge convention. Its dynamic sporty appearance at the front is thanks to the 3-dimensional shape of the grille, vertical fog lamp housings and integrated bi-function headlamps with sharp LED 'Daytime Running Lights'... giving you a style that simply says 'my life ... my way'.



STONIC

BAILE ATHA CLIATH
IRL **STONIC**
KIA HOME OF THE 7 YEAR WARRANTY www.kiamotors.ie

A red Kia Stonic is shown from the side, parked on a cobblestone street. The car's sleek design, including its roof rails and alloy wheels, is visible. In the background, there is a stone building with a dark doorway. An orange graphic element frames the top right corner, containing the title and a speech bubble icon.

Challenge convention



From behind, the agile Kia Stonic makes a striking and lasting impression. The dramatically raked, spoiler-capped backlight window and bold wheel arches give it a muscular view; whilst three-dimensional graphics inside the LED rear combination lamps make it truly striking. What's more its sleek, sculpted tailgate and airflow regulating silver skid plate gives it that strong but silent urban feel which guarantees to turn heads.



Be true to your own identity

Living the moment means no boundaries, and that's exactly what you can expect inside the new Kia Stonic. Sculpted contours immediately please the eye and the senses, making driving fresh and fun. The D-Cut steering wheel shown here in the K3 is shaped to stay clear of your legs, whilst the other controls are designed and positioned to place you and your demands in perfect unison.







7" colour screen navigation system The multi-language system includes a high-definition 7" TFT-LCD screen and a reversing camera display.



Bluetooth In the new Stonic, Bluetooth technology gives you hands-free access to your phone and selected functions.



Digital Audio Broadcasting (DAB+) DAB uses a digital signal to deliver optimal clarity and performance over the radio, as well as programme and track information. K3 and K4 models.



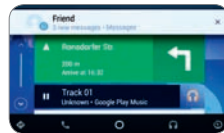
Voice recognition Voice recognition lets you navigate, place and take calls, listen to text messages, control audio and more – all by using your voice when you have connected Apple CarPlay or Android Auto.



Seize every second

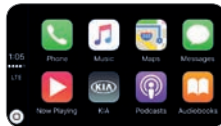


When you're in control, information is essential and the new Kia Stonic puts it right where you need it, while banishing any distractions. Bluetooth technology offers hands-free access to your phone using voice recognition, whilst the state-of-the-art information system with its floating colour touchscreen keeps you fully informed and entertained.



androidauto

Android Auto™ is designed to keep you perfectly connected to your phone – while minimizing distractions so you stay safe on the road. The simple, intuitive interface lets you access features like Google Maps, apps, music and voice control, and automatically organizes info into simple cards that appear just when they're needed.



Apple CarPlay™ is a smart, safe way to use your iPhone while driving. It takes all the things you might want to do, and puts them into your Stonic's display, so you can get directions, make a call and listen to music – all while staying focused on the road.

1. 3.5-inch supervision cluster Between the speedometer and tachometer, the screen displays auto and audio information. An optional TFT-LCD screen offers multiple languages and pop-up messages.

2. Aux & USB front charger A USB outlet lets you charge mobile phones and other devices, plus audio accessories can be connected via a 3.5 mm (analog) jack.

3. Rear USB charging port A USB jack at the rear of the centre console lets rear-seat occupants charge their devices, too.





Share the experience

Special moments in life are more fun when you share them with friends and family. That's why the new Kia Stonic's roomy interior can seat up to five people with ample space for stretching and relaxing. And, when you're on the move or simply chilling out, the up-to-date entertainment choices, automatic air conditioning (K3, K4), and heated front seats (K4) make the whole experience even more inviting.





Open to any possibility

When routine is the last word on your mind, the Kia Stonic is designed to put your plans and dreams in motion. With folding and split seats, and spacious interior and flexible capacity from 352 litres to a huge 1,155 litres, it's easier than ever to set out and explore or simply tackle whatever the day brings.

1. Folding rear seats Rear seats fold nearly flat, so you can fit long or bulky items in the extended cargo space.

2. 60:40 split-folding rear seats The rear seat backs split 60:40 and fold flat separately, offering you useful choices for managing cargo and passenger space.

3. Adjustable cargo floor Position the cargo area floor higher to be flush with the folded seat backs (left) or lower to accommodate tall items (right).





4. Covering shelf A rear covering shelf keeps cargo out of sight. Attached to the tailgate by cords, it lifts easily out of the way when the gate is opened.





Dynamic in every way

When you're living the moment, power and precision needs to go hand-in-hand and that's exactly what you can expect behind the wheel of the Stonic. Paired with a quick-changing manual transmission, each engine combines remarkable power and appealing efficiency.





BAILE ÁTHA CLIATH
STONIC
HOME OF THE 7 YEAR WARRANTY www.kiamotors.ie



7-DCT*



6 M/T

Automatic transmission Enjoy smooth acceleration, agile gear shifts and fuel economy thanks to the new 7-speed DCT Dual Clutch Transmission.

Manual transmission The 6-speed transmissions offer quick, smooth gear changes and gear ratios, boosting power and efficiency.

Protect what you love



Wherever you are, whatever you're doing, you can be sure that the Kia Stonic is protecting you and the people around you. That's because it's engineered to help drivers stay out of trouble and to manage collision forces in ways that minimise damage.

- 1. Hill-start Assist Control (HAC)** When you're on a steep upward incline, pulling away from a standing start can be a concern, but don't worry, HAC is designed to stop you from rolling backwards.
- 2. Vehicle Stability Management (VSM)** Working in concert with the motor-driven power steering, Kia's VSM helps ensure that the Stonic remains stable when simultaneously braking and cornering.
- 3. Cornering Brake Control (CBC)** Designed to help you stay on track when you turn, CBC applies asymmetrical braking force to individual wheels when braking whilst cornering, which counteracts any potential loss of traction meaning greater safety.
- 4. Torque Vectoring System (TVBB)** An additional function of the integrated electronic stability control system, our new TVBB technology means the Kia Stonic maintains a higher degree of handling stability and security when cornering, while helping to reduce understeer during harder cornering.



AHSS

steel for greater strength and added cabin protection

The Stonic uses Advanced High Strength Steel (AHSS) to deliver greater average tensile strength that makes the body phenomenally rigid, enhancing cabin protection as well as dynamic performance.



98 metres

of structural adhesive for reduced noise

Greater use of structural adhesive means the new Kia Stonic is both rigid and light, and offers outstanding noise and vibration management.

8

hot-stamping zones for extra strength

The Stonic features hot-stamping of components in eight core stress areas, contributing to exceptional rigidity, meaning the strengthened body structure helps provide improved crash protection.

6

airbags

Protection includes front airbags for the driver and front-seat passenger, two airbags at the sides, and two curtain airbags running the length of the cabin.





Expand your horizons

Discovering new places and experiences is a lot easier when you know you're supported by the latest Kia Stonic technology. Not only will it inspire and help you discover what you're looking for, but will also add an exciting dynamic to every element of your journey.





BAILE ATHA CLIATH

IRL

STONIC

HOME OF THE 7 YEAR WARRANTY www.kiamotors.ie

Anticipate the unexpected



With Stonic's Drive Wise technology, being at the wheel is simply more satisfying. Whether you're parking, manoeuvring city streets, in the fast lane or on the open road, Drive Wise features watch out for trouble, alert you, and even step in, to help you stay in the clear.

- 1. Rear Cross-Traffic Collision Warning (RCCW)** When you back out of a parking spot or driveway, radar-based RCCW warns you if it detects cross-traffic in the lane the vehicle is entering. K4.
- 2. Blind-Spot Collision Warning (BCW)** Using radar to monitor the sides and rear of the vehicle, BCW uses audio-visual alerts to inform you about any vehicles in your blind spot, ensuring easier and safer lane changes. K4.
- 3. Lane Keeping Assist (LKA)** When you start drifting out of your lane, LKA alerts you and even steers you back to your original position. K3 & K4.
- 4. High Beam Assist (HBA)** Responding automatically to the brightness of the lights of other vehicles and road conditions, HBA switches off the high beams temporarily, to reduce glare that may affect other drivers. K3 & K4.
- 5. Driver Attention Warning (DAW)** To help prevent distracted or tired driving, DAW monitors driver and vehicle inputs. If it senses reduced attention, it sounds a chime and displays a warning in the supervision cluster display. K3 & K4.





**DRIVE
WISE**



SAFETY



CONVENIENCE



EFFICIENCY

DRIVE WISE, uses the latest Advanced Driver Assistance System (ADAS) technologies, to ensure occupant and pedestrian safety at all times, while never sacrificing the pleasure of driving.

Forward Collision-Avoidance Assist (FCA)

Combining radar and camera data, FCA activates the brakes when it detects sudden braking by a car ahead, and can stop completely from speeds up to 60 km/h. If FCA senses a pedestrian ahead, it warns you. If you don't respond, it will brake for you to avoid or lessen impact. K3 & K4.

Keep them guessing

Because you don't do everyday, the Stonic doesn't, either. So you'll find refreshingly bold and lively colours that bring out the best of its contours and express the free spirit in you.

Clear White



Silky Silver



Platinum Graphite



Aurora Black Pearl



Signal Red



Deep Sienna Brown



Relish every detail

Whether your style is urban or outdoorsy, let your personality shine through with a Stonic interior treatment and make your own personal statement. You can choose from a variety of tasteful and durable colour and fabric treatments that shout (or whisper) the real you.

Black one-tone K1



Black artificial leather trim

Black artificial leather trim is embossed in a subtle diagonal plaid arrangement of micro perforations for breathability. Consistently luxurious deep black trim on the doors and dash give the interior an elegant ambience.

Black one-tone K2



Standard cloth

A pleasing combination of soft tricot and lightly patterned woven cloth seat material provides comfort and support. The doors and dash feature trim and painted metal in colours that complement the shades of the cloth trim.

Grey package K3



Two-tone grey interior

Two-tone medium-grey cloth and artificial leather trim seats, featuring coloured embossing with grey stitching that matches the lighter grey tone of the dash and centre console trim. Door armrests are a lighter grey.

Bronze package K4



One-tone black interior

Black artificial leather seats featuring bronze stitching that matches the metal bronze colour of the centre console trim, crash pad and door armrests.

Expect more

True style is knowing your own mind and expressing your own personality. That's why the Kia Stonic comes with a range of custom-designed accessories from eye-catching side and tailgate trims to striking mirror caps and more. Here's just a small selection of the wide range you can choose from to make your Stonic uniquely yours.



Dog guard

Easier transport, higher comfort: for passengers and pet dog. This robust grid is easy to install and perfectly fitting between the rear seatbacks and roof. It makes sure everything stays securely where it should, without restricting the driver's rear view.



Entry guards

First impressions always count and these stainless steel entry guards will give any passenger a flash of premium shine and a hint of the experience to come.



Door mirror caps, brushed

When attention to detail is a must, these brushed stainless steel door mirror caps are the perfect expression of style and substance.



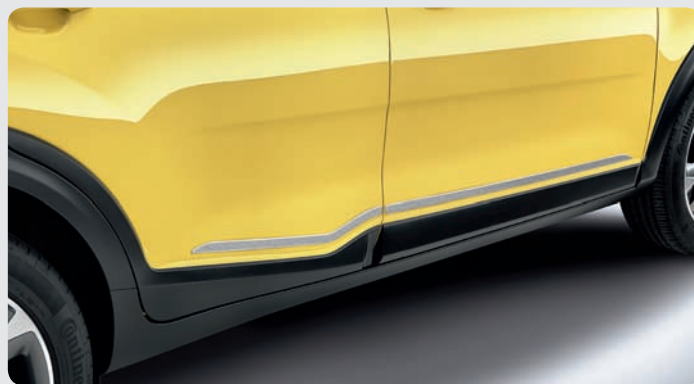
Tailgate trim line, brushed

Made-to-measure, made-to-impress: add a polished edge to your tailgate with this exhilarating trim line in brushed stainless steel.



Rear bumper protector, brushed

Just the right fit, just the right protection: whenever you load and unload heavy objects or luggage, this sturdy yet stylish stainless steel protector provides an effective shield against any paintwork damage to your rear bumper.



Side trim line, brushed

Uniquely elegant, these brushed stainless steel mouldings give the side contours of your Stonic that extra touch of excitement.

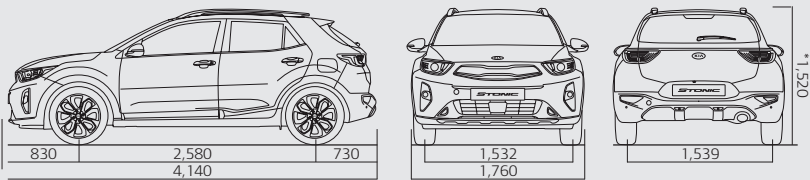
All brushed stainless steel styling accessories are also available in chrome optic finish.

Stand out from the crowd

With its striking silhouette and muscular contours, the Stonic will always draw longing glances. But you can stamp your own extra personality on it by choosing to add upgraded wheels. After all, only you know what you want to say.

Dimensions (mm)

*with roof rack



Dimensions and capacities

Overall length (mm)	4,140	Overall width (mm)	1,760
Overall height (mm)	1,485 (15") 1,505 (17")	Wheelbase (mm)	2,580
Front overhang (mm)	830	Rear overhang (mm)	730
Fuel tank (litres)	45		
Luggage (VDA)	332		

Engines	1.0 TGI	
Transmission	6-speed MT	7-speed DCT
Driveline	2WD	2WD
Fuel type	Gasoline with Gasoline Particle Filter (GPF)	Gasoline with Gasoline Particle Filter (GPF)
Engine type	12 (four per cylinder)	12 (four per cylinder)
Engine Displacement (cc)	998	998
Max. power (PS/rpm)	120	120
Max torque (Nm/rpm)	172	172
Top speed (kph)	184	185
CO ₂ Combined (Urban) (g/km)	141–148	128–136 N/A–135
CO ₂ Combined (Extra-urban) (g/km)	104–111	106–112 N/A–111
CO ₂ Combined (Combined) (g/km)	118–125	114–121 N/A–120
Fuel consumption (Urban) (liter/100 km)	6.2–6.5	5.6–5.9 N/A–5.9
Fuel consumption (Extra-urban) (liter/100 km)	4.6–4.9	4.6–4.9 N/A–4.9
Fuel consumption (Combined) (liter/100 km)	5.2–5.5	5.0–5.3 N/A–5.2
Kurb weight (kg) (max)	1,278	1,313
Gross vehicle weight (kg)	1,640	1,670
Max tow weight (kg) - Braked	1,110	
Max tow weight (kg) - Unbraked	450	

Max. 150,000 km vehicle warranty. Valid in all EU member states (plus Norway, Switzerland, Iceland and Gibraltar). Deviations according to the valid guarantee conditions, e.g. for paint and equipment, subject to local terms and conditions. The specified consumption and emission values were determined according to the legally prescribed measurement procedures (EU) 2017/1153. The above values have been tested in the new WLTP (Worldwide Harmonized Light vehicle Test Procedure) test cycle and converted back to NEDC (New European Driving Cycle) in addition measured according to the RDE (Real Driving Emissions) method.

Interior

	First row	Second row
Headroom (mm)	996	975
Legroom (mm)	1,070	850
Shoulder room (mm)	1,375	1,355

1.25 MPI	1.6-litre CRDi (low)
5-speed MT	6-speed MT
2WD	2WD
Gasoline	Diesel with Selective Catalytic Reduction (SCR)
16 (four per cylinder)	16 (four per cylinder)
1,248	1,598
84	115
122	280
165	180
151–159	114–121
119–123	96–97
131–136	103–106
6.6–6.9	4.3–4.6
5.2–5.4	3.7–3.7
5.7–5.9	3.9–4.0
1,238	1,363
1,600	1,720
910	1,110
450	450

Wheels



15-inch alloy wheel



17-inch alloy wheel



17-inch alloy wheel



7 Year Map Update

As part of our extensive quality promise, all new Kia vehicles factory-fitted with an LG navigation device are entitled to 6 free annual map updates at the service point. This unique programme ensures your navigation system is always up to date.



Bring on the future

7-year vehicle warranty

This bumper-to-bumper warranty is free and transferable to subsequent owners, provided the car is regularly maintained in accordance with the servicing schedule.

5-year paint warranty & 12-year anti-perforation warranty

High-quality body paint ensures long-lasting protection and shine for your new Kia. It also comes with superior corrosion protection and a 12-year warranty against rust from the inside out.

Stay in touch with Kia

Visit www.kia.com for all the latest news and product launches. Find out more about Kia and our exciting new car range. Get updates on achievements in alternative fuel development, and discover what our Environment Research Centre is working on.

We're also involved in major sporting events: Kia is an official partner of both UEFA and FIFA. We sponsor the Australian Open and the tennis star Rafael Nadal. Here in Ireland, Kia is a proud sponsor of Community Games and The Kia Race Series.

Financing

Your local Kia dealer can help you with a financing plan that's best suited to your needs. Please ask for details.

Care-3

Our Care-3 plan means looking after your new Kia is a piece of cake. In order to keep your new Kia running like new, it has to be serviced every year. Now imagine having all the servicing your new Kia will need for the next three years sorted and paid for, in advance, and at a competitive price. Introducing Kia Care-3, the easy way to look after your new Kia, and protect your 7 year warranty.

The Kia 7-year warranty

Max. 150,000 km vehicle warranty. Valid in all EU member states (plus Norway, Switzerland, Iceland and Gibraltar). Deviations according to the valid guarantee conditions, e.g. for paint and equipment, subject to local terms and conditions.

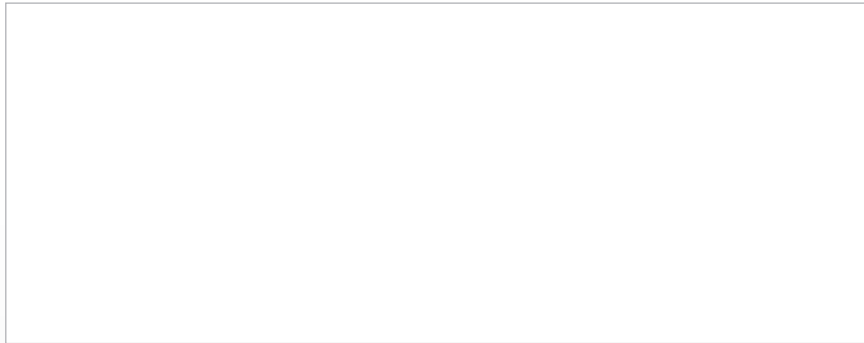




The Kia 7-year warranty

Max. 150,000 km vehicle warranty. Valid in all EU member states (plus Norway, Switzerland, Iceland and Gibraltar). Deviations according to the valid guarantee conditions, e.g. for paint and equipment, subject to local terms and conditions.

www.kia.com



Kia Motors Ireland,
Unit A8 Calmount Park,
Calmount Road,
Dublin 12,
Ireland

All information, illustrations and specifications are correct at the time of printing and are subject to change without notification. The models and specifications shown in this brochure may vary from the models available in your market. Due to the limits of the printing process, the car body colours shown may differ slightly from actual colours. Please contact your local Kia dealer for the most recent information.



The Power to Surprise