



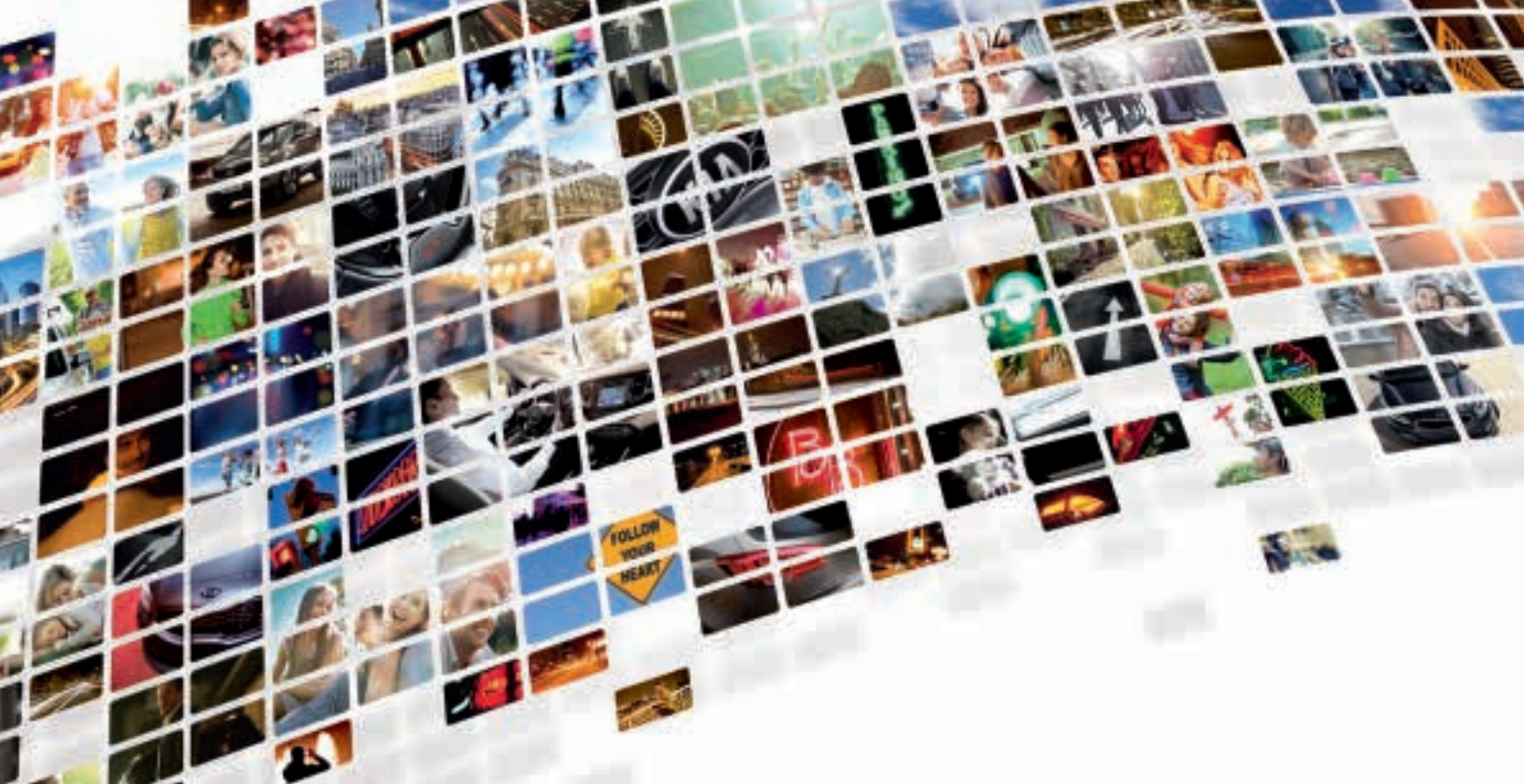
The new Kia

XCEED



The Power to Surprise





Life is what you make of it. Welcome to the world of Kia.

Life is spectacular. It is vivid, unpredictable and exciting in all its facets. Whatever will happen, wherever you will go and whatever you will discover, Kia is with you.

We at Kia have dedicated our lives to making a contribution towards building a better future. That is why we develop and build cars which help you to discover and enjoy new horizons. Cars with stunning designs, advanced technologies and smart solutions. Cars with our remarkable 7-year warranty as proof of our outstanding quality. Whatever we do, we are driven by one mission: to always exceed your expectations.

We call it 'The Power to Surprise'. Now, we invite you to take a closer look and allow us to surprise you.



Thrill...
your spirit



If seeking new challenges inspires you, if embracing new experiences excites you, if leaving everyday comfort zones drives you on, then welcome to the different beat of the new Kia XCeed. Straight away you can tell this is a cross-over with a difference. Notice the standout SUV front grille, incorporating a unique Z-shaped Ice-Cube LED headlamp design with standard fog lamps. Then look closer and take in the daring lower front grille and subtle satin chrome skid plate, which add extra excitement. Add to that its bold shape and playful persona and suddenly it becomes clear – the new Kia XCeed is designed for drivers who live for the next thrill ahead.

Challenge your



... perceptions

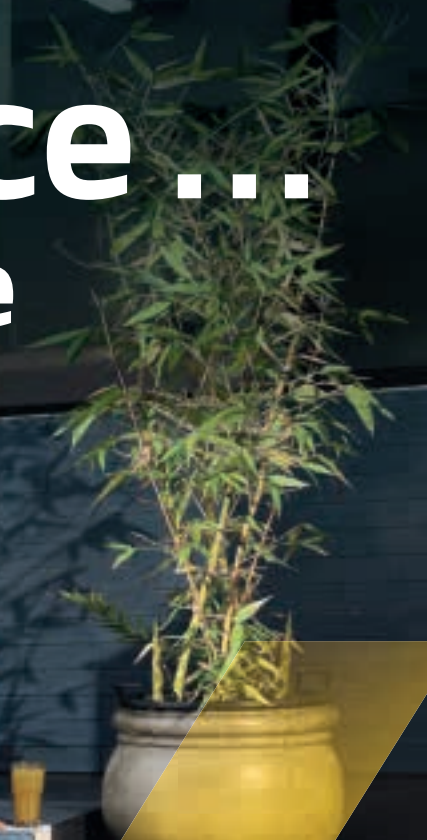
Cross over to the buzz of doing it your way; the joy of exploring your own thing; the fun of playing to your own tune ... in the new Kia XCeed the possibilities are endless. From its sporty coupé crossover silhouette, highlighted by a fast-sloping roofline and SUV-styled wheel arches and side sill, down to the bold dedicated 18" wheel design (K3 and K4), it's obvious that the Kia XCeed stands proudly away from the crowd. Add to that a generous ground clearance for any terrain, with an elevated yet still sporty seating position for maximum visibility as well as sheer driving pleasure, and you have the perfect partner for discovering new horizons, inside and out of the city.



Where others may shy away from what's round the next corner ... you say bring it on. That's why when you drive past in the new Kia XCeed, others simply look on in admiration at your choice of crossover and how much it says about you. Maybe it's the iconic low-angle rear design with elegant tail lights that demands respect; or maybe it's the distinctive shape of the rear bumper that leaves such an impression; or even the dual exhaust tips and hyper-silver diffuser that set the pulse racing. Or maybe it's simply because from behind the new Kia XCeed looks and sounds like exactly what it is ... the most thrilling driving experience around.



Embrace ...
your irreverence





The image shows the interior of a car, specifically the driver's side. A large, semi-transparent yellow 'X' is overlaid across the center of the image. The text 'Expand... your horizons' is written in white, bold, sans-serif font, centered over the 'X'. The background shows the steering wheel with the Kia logo, the dashboard with a digital display, and the front seats with a yellow honeycomb pattern. The car is parked on a street with trees and buildings visible through the windows.

Expand... your horizons

If you know your own mind and set your own standards for innovation, you'll immediately know that the stylish interior of the new Kia XCeed sets new benchmarks in quality, comfort, technology and connectivity. From the moment you sit inside you'll discover a striking combination of style and substance, from the sleek dashboard to the sophisticated seating, from the highly visible 12.3" full digital cluster display (K4) to the 10.25" navigation system (K3 and K4).

For added fun, there's also our yellow interior colour pack, featuring yellow accents on the dashboard, yellow door panel stitching and seats with yellow stitching and a unique honeycomb pattern design (K3 and K4).



Fire ... your freedom

Being open to the city, open to adventure and open to endless possibilities means the new Kia XCeed is your ideal travelling companion. With its dynamic yet spacious new body type, you never need to sacrifice style or versatility. From the moment you see the 60:40 rear folding seats, 426 litres of spacious luggage room, the numerous storage features... you'll know that this is a crossover designed to work for you as well as delight and surprise everyone with you.



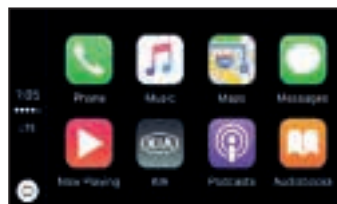
Connect ... your world

If possibilities know no boundaries, and you're constantly on the move, the new Kia XCeed keeps you connected with technology that is both simply effortless and compatible with Android Auto and Apple CarPlay. Select your destination via the premium navigation system with seamless 8" or 10.25" touchscreen, charge your phone wirelessly (K3 and K4) or use Bluetooth® with voice recognition for all your music and calls – whatever the journey holds, you're always connected and ready for it.

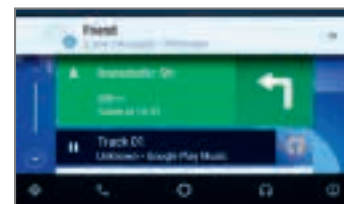


Wireless phone charger (K3 and K4).

Forget cables, just place your smartphone with Qi technology on the convenient wireless phone charger.



Apple CarPlay™ is a smart, safe way to use your iPhone while driving. It takes all the things you might want to do, and puts them into your XCeed's display, so you can get directions, make a call and listen to music – all while staying focused on the road.



androidauto

Android Auto™ is designed to keep you perfectly connected to your phone – while minimizing distractions so you stay safe on the road. The simple, intuitive interface lets you access features like Google Maps, apps, music and voice control, and automatically organizes info into simple cards that appear just when they're needed.



7 Year Map Update

As part of our extensive quality promise, all new Kia vehicles factory fitted with an LG navigation device are entitled to 6 free annual map updates at the service point. This unique program ensures your navigation system is always up-to-date.

Protect ... your independence

Safety and assistance

Whilst the thrill of the road ahead and the excitement of new experiences drive you, it's good to know that you're constantly being protected, too. That's why the new Kia XCeed comes with Kia's ADAS (Advanced Driver Assistance Systems) – a range of innovative features and sophisticated technology to keep you and your passengers as safe as possible.



Forward Collision-Avoidance Assist (FCA)

The FCA system can detect preceding vehicles as standard and, as an option, pedestrians crossing the road. Using a camera and radar sensors to monitor the velocity of and distance between vehicles, it warns the driver in the event of a potential collision risk by activating a visual alert. In conjunction with pedestrian detection, the steering wheel gives a haptic response. If there is no driver reaction, the car brakes automatically to avoid or mitigate an accident.



High Beam Assist (HBA)

When conditions allow, the XCeed will turn on its high beams automatically. When the camera in the windscreen detects the headlights of an oncoming vehicle at night, the High Beam Assist system automatically switches to low beam to avoid dazzling other drivers.



Blind-Spot Collision Warning (BCW) K4 only

The Blind-Spot Collision Warning system has radar sensors that monitor your blind spots and warn you of oncoming cars with a symbol in the side-view mirror.



Lane Keeping Assist (LKA)

No need to worry about drifting out of your lane. Lane Keeping Assist uses a camera mounted at the top of the windscreen to monitor lane markings, and if you move out of the lane unintentionally the system will alert you and even steer the car back into your lane.



Rear-View Monitor (RVM) with Dynamic Parking Guidance

The Rear-View Monitor, available on the 8" or 10.25" multimedia and navigation screens, gives you the full picture when reversing into a parking spot by displaying dynamic guidelines to help guide you into place.



Driver Attention Warning (DAW)

The system detects whether you're losing concentration by monitoring the pattern of the steering wheel, indicator, acceleration and overall duration of the journey. If you show signs of drowsiness or inattentiveness, DAW alerts you and recommends taking a break.

Prize ...

your originality

When every opportunity is an adventure waiting to happen, the new Kia XCeed has a whole range of accessories to match your thirst for embracing it. From a quick weekend away, to sporting adventures or big shopping excursions, our range covers all your needs including handy extras to personalise your experience. It also includes many stylish solutions to emphasise the dynamic looks of your new XCeed. Whatever you're looking for, we've got you sorted.



Cross bars, aluminium

Light and easy to install, these strong and perfectly fitting aluminium cross bars help you transport all you could possibly need on your next adventure.



Bike carrier for all tow bars, and roof box

The bike carrier for all tow bars is the ideal companion for cycling holidays or day trips out. Designed for maximum enjoyment and minimum hassle. It can carry two bikes. In addition, you'll probably need more luggage space than usual. Before you start cramming things into your cabin, enjoy the comfort of this sleek and durable roof box. Easy to install and with dual side opening for extra-fast access.



Rear bumper trim line, chrome optic

A small detail, with a sophisticated touch. Introduce this refined surface finish to your rear bumper in delicate dark stainless steel, for a sleek accent along your rear bumper. Also available in brushed aluminium finish.



Trunk sill trim line, chrome optic

These glossy stainless steel shields are ideal for adding a refined horizontal detail to the inner sill and rear bumper of your XCeed's load area. Also available in brushed stainless steel finish.



Door mirror caps, chrome optic

Attention to detail can make all the difference. Raise the overall visual impact of your XCeed by complementing its exterior styling with these high-gloss stainless steel caps. Also available in brushed stainless steel finish.



LED trunk and tailgate lights

Never feel helpless again while trying to find some specific item in the dark or step into something while doing so. The LED trunk and tailgate lights come to life as soon as you open the tailgate. Enjoy perfect visibility in and outside your trunk!

Delight ...

your senses

The fun starts here with stylish interior options, carefully selected materials and bold trims; you'll want to get behind the wheel instantly. Choose the K2 and you'll experience our stylish all-black fabric upholstery, with satin chrome dashboard and air vents, or for the ultimate style statement there's our yellow colour pack with yellow stitching, honeycomb seat pattern design, eyecatching yellow accents on the dashboard and black rooflines in the K3 and K4.

Interior grades



K2 Trim Line

This features all-black fabric seat upholstery and striking satin chrome finishes.



K3 and K4 Trim line

This yellow colour pack comes with black artificial leather and cloth fabric seats with yellow stitching and honeycomb pattern design, coupled with a high-gloss centre fascia and eyecatching yellow metal dashboard accents.

Make ... your statement

With a choice of 6 distinctive body colours and the choice of 16" or 18" alloy wheels, there's a Kia XCeed destined to be your personal favourite.

Specification and colours

Exterior colours



Cassa White (WD)



Penta Metal (H8G)



Lunar Silver (CCS)



Infra Red (AA9)



Cosmos Blue (CB7)



Quantum Yellow (YQM)

Rims

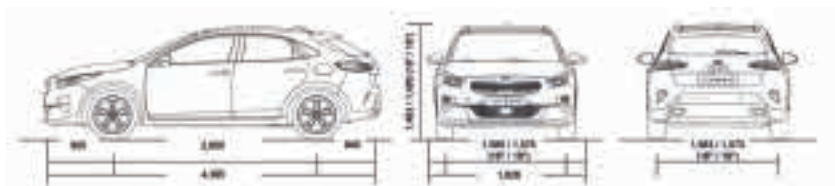


16" alloy wheel



18" alloy wheel

Dimensions (mm)



Specifications

Engine	1.0-litre T-GDI – GPF	1.6-litre CRDi (low) – SCR
Transmission	6-speed MT	6-speed MT
Driveline	FWD	FWD
Fuel type	Gazoline with Gazoline Particle Filter (GPF)	Diesel with Gazoline Particle Filter (SCR)
Engine type	12 (four per cylinder)	16 (four per cylinder)
Engine displacement (cc)	998	1,598
Max. power (PS/rpm)	120	136
Max. torque (Nm/rpm)	172	280
Top speed (kph)	186	200
CO ₂ combined (urban) (g/km)	148-156	121-122
CO ₂ combined (extra-urban) (g/km)	110-115	103-110
CO ₂ combined (combined) (g/km)	124-130	109-114
Fuel consumption (urban)	6.5-6.8	4.5-4.6
Fuel consumption (extra-urban)	4.8-5.0	3.8-4.2
Fuel consumption (combined)	5.4-5.7	4.1-4.3
Kerb weight (kg) (max.)	1,383	1,472
Gross vehicle weight (kg)	1,820	1,900
Max. tow weight (kg) braked	1,200	1,200 (1,500)
Max. tow weight (kg) unbraked	600	600 (650)

Dimensions and capacities

Overall length (mm)	4,395	Overall width (mm)	1,826
Overall height (mm)	16"/1,483 18"/1,495	Wheelbase (mm)	2,650
Front overhang (mm)	905	Rear overhang (mm)	840
Fuel tank (litres)	50		
Luggage (VDA)	426/1,378		

Interior

	First row	Second row
Headroom (mm)	987	953
Legroom (mm)	1,073	883
Shoulder room (mm)	1,428	1,406

The specified consumption and emission values were determined according to the legally prescribed measurement procedures set out in (EU) 2017/1153. The above values have been tested in the new WLTP, Worldwide Harmonised Light Vehicle Test Procedure, test cycle and converted back to NEDC, New European Driving Cycle, and additionally measured according to the RDE, Real Driving Emissions, method.

All Peace of mind you'll need

7-year vehicle warranty

This bumper-to-bumper warranty is free and transferable to subsequent owners, provided the car is regularly maintained in accordance with the servicing schedule.

5-year paint warranty & 12-year anti-perforation warranty

High-quality body paint ensures long-lasting protection and shine for your new Kia. It also comes with superior corrosion protection and a 12-year warranty against rust from the inside out.

Stay in touch with Kia

Visit www.kia.com for all the latest news and product launches. Find out more about Kia and our exciting new car range. Get updates on achievements in alternative fuel development, and discover what our Environment Research Centre is working on.

We're also involved in major sporting events: Kia is an official partner of both UEFA and FIFA. We sponsor the Australian Open and the tennis star Rafael Nadal. Here in Ireland, Kia is a proud sponsor of Community Games and The Kia Race Series.

Financing

Your local Kia dealer can help you with a financing plan that's best suited to your needs. Please ask for details.

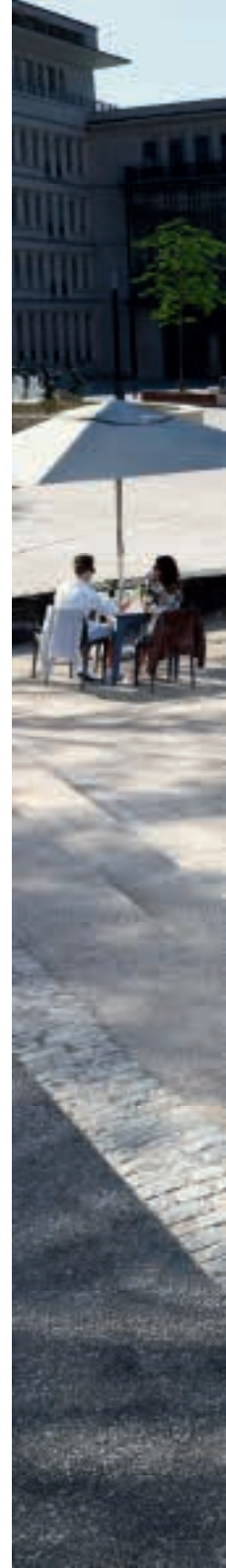
Care-3

Our Care-3 plan means looking after your new Kia is a piece of cake. In order to keep your new Kia running like new, it has to be serviced every year. Now imagine having all the servicing your new Kia will need for the next three years sorted and paid for, in advance, and at a competitive price. Introducing Kia Care-3, the easy way to look after your new Kia, and protect your 7 year warranty

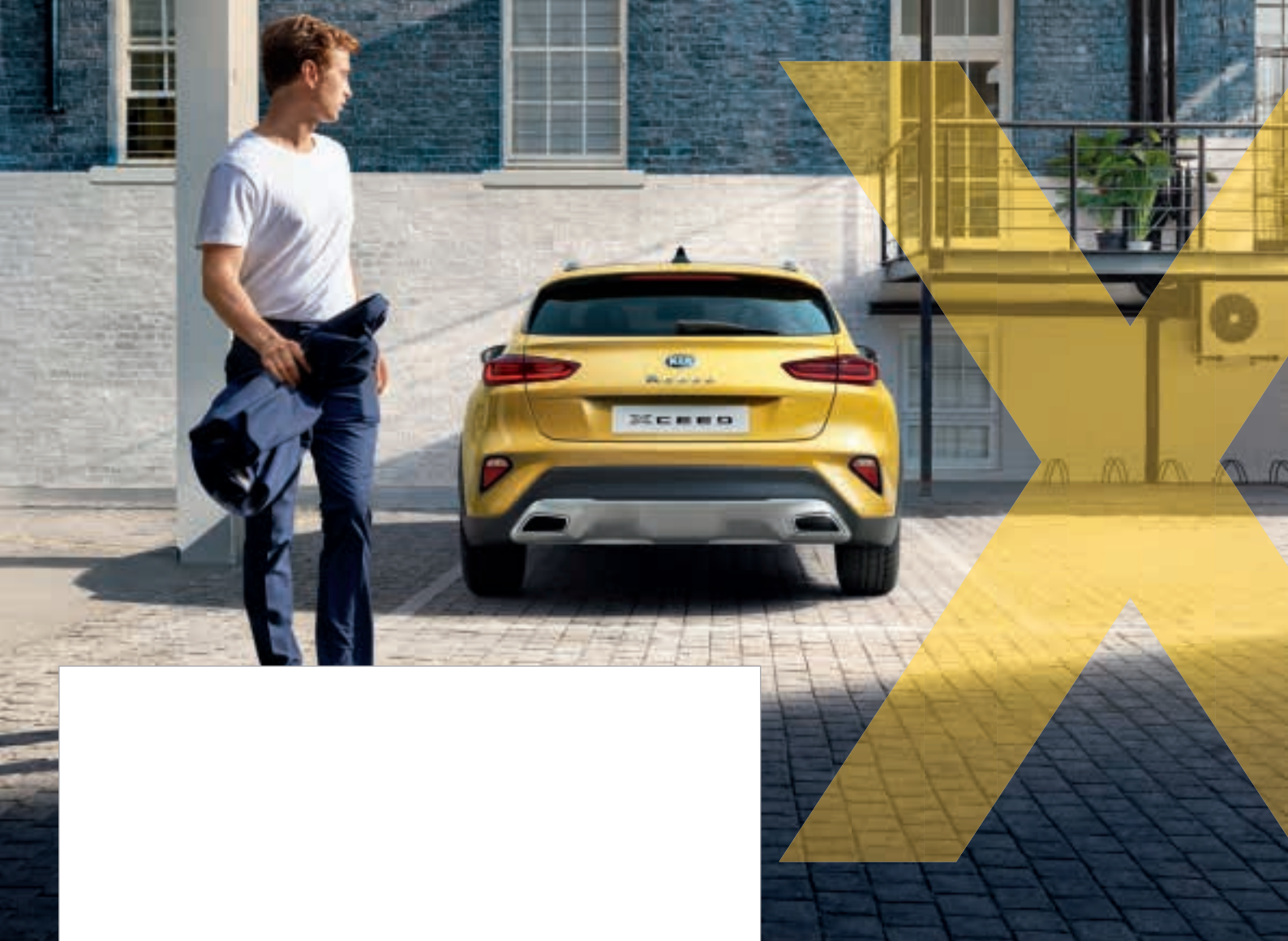


The Kia 7-year warranty

Max. 150,000 km vehicle warranty. Valid in all EU member states (plus Norway, Switzerland, Iceland and Gibraltar). Deviations according to the valid guarantee conditions, e.g. for paint and equipment, subject to local terms and conditions.







Kia Motors Ireland,
Unit A8 Calmount Park,
Calmount Road,
Dublin 12,
Ireland

00.000000

All information, illustrations and specifications are correct at the time of printing and are subject to change without notification. The models and specifications shown in this brochure may vary from the models available in your market. Due to the limits of the printing process, the car body colours shown may differ slightly from actual colours. Please contact your local Kia dealer for the most recent information.



The Power to Surprise